



AR GYFER BUSNES
CAMBRIA
FOR BUSINESS



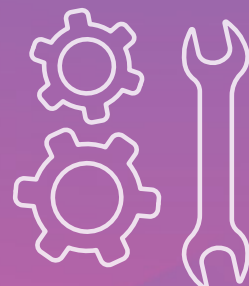
COLEG
CAMBRIA



Prentisiaethau
Apprenticeships



Apprenticeships Guide





We offer Apprenticeships in most occupational areas including;

Accounting
Agriculture & Precision Agriculture
Animal Care & Management
Beauty, Spa & Complimentary Therapies
Business Administration
Business, Management & Leadership
Childcare, Childhood Studies & Playwork
Construction & Building Services
Customer Service, Advice & Guidance
Digital Technologies, Computing & IT
Engineering, Manufacturing & Maintenance
Equine
Fabrication & Welding
Floristry
Food Manufacturing
Forestry & The Countryside
Hairdressing & Barbering
Health & Social Care
Horticulture & Landscaping
Hospitality & Catering
Motor Vehicle
Social Media & Digital Marketing
Teaching, Assessing & Education
Warehousing & Logistics

What is an Apprenticeship?

An Apprenticeship gives you the opportunity to gain a qualification while employed and earning a salary. You will gain vital workplace skills and experience alongside industry recognised qualifications to help you grow in your career. To complete an Apprenticeship you must be employed in a relevant job to the qualification you want to complete and have support from your employer.



How it works

In Wales, apprentices need to be 16+ and work a minimum of 16 hours per week to complete an Apprenticeship. The employer must be willing to support you in the Apprenticeship as you will be assessed in the workplace and may need to regularly attend college (this depends on the qualification) to learn new skills and complete any exams.

You will be assigned an industry experienced practitioner who will come into your workplace and set tasks for you to collect evidence which goes towards your qualification. They will also check on your wellbeing and ensure there are no issues or signpost you to additional support at Cambria if needed.

Apprenticeships can be delivered at Level 2 - Level 6

Level 2 Foundation Apprenticeship

This is the starting block for apprenticeships, it gives you the foundations and understanding of the job.

Level 3 Apprenticeship

A Level 3 is a progression from the Level 2 and gives you more of an in depth knowledge of the subject and is equivalent to 2 A Level passes. You may need to be in a certain job role to be eligible.

Level 4 and 5 Higher Apprenticeship

Level 4/5 NVQs or HNC qualifications are usually equivalent to the first year of university. A high level of knowledge and understanding is needed to study at this level.

Level 6 Degree Apprenticeship

The Level 6 qualifications are degrees delivered in partnership with our university partners.

Finding an Apprenticeship

Be proactive!

SIOP SWYDDI  JOB SHOP

Finding the best apprenticeship for you can take time but it's just like looking for a job, something perfect will come along soon!

Keep an eye on the Welsh Government Apprenticeship Vacancy Service and the Coleg Cambria Job Shop for opportunities as well as looking at other job sites and contacting companies directly.

Canllaw
Prentisiaethau
Apprenticeships
Guide



0300 30 30 006 WWW.CAMBRIA.AC.UK

Get your CV ready and apply

Brush up your CV and interview skills before applying for each job and keep an eye on your emails and phone for an invitation to interview! Some companies may also ask you to come in for a work trial before offering a position or ask you to complete a short test.

Getting onto the qualification

Once you have started in your position, the company you are employed by will need to contact us to discuss the qualification and sign off some paperwork.

Top tip!

If you're a current student you can ask our JobShop for help with your CV and interview tips.

Parent FAQs / Apprenticeship myths

You can do an apprenticeship without an employer
False! You need to be employed to do an Apprenticeship

Apprenticeships are only for construction trades
False! You can do an apprenticeship in multiple sectors - Finance, Digital, Management, Agriculture, Hospitality and Catering, Hair and Beauty - to name a few!

Apprentices don't get paid
False! Apprentices must be paid at least the Apprenticeship minimum wage by their employer, but most places pay more. You can view the most recent salary requirements on the Government website.

You can't go into Higher Education with an Apprenticeship
False! At Cambria, you can do Degree Apprenticeships with many employers in sectors such as Engineering, Aerospace and Digital.

What support can Apprentices access?
There's lots of support available for Apprentices through the College including through their work based learning practitioners and Student Services. Apprentices can also access ACAS or other advisory services for advice.

What should I do if I don't have an employer?
Finding a company and role that suits you can take time so it is always best to enrol onto a full time course whilst you are looking.

We offer Apprenticeships in most occupational areas including;

- Accounting
- Advice and guidance
- Agriculture
- Animal Care
- Automotive
- Business Administration
- Childcare
- Construction & Building (various trades)
- Customer Service & Retail
- Digital Technology
- Engineering (various disciplines)
- Equine
- Fabrication and Welding
- Floristry
- Food Manufacturing
- Hairdressing & Beauty
- Health and Social Care
- Horticulture
- Hospitality & Catering
- Laboratory Technicians
- Leadership & Management
- Learning & Development
- Leisure Operations
- Manufacturing
- Playwork
- Supporting Teaching and Learning
- Warehousing & Logistics

Accounting

Accountants are responsible for the financial aspect of businesses of all sizes and are relied upon to provide an accurate financial picture of a company. Apprentices in this industry will be working alongside experienced teams to gain their knowledge as well as attending day release in college.

Learners completing these qualifications need to be good with figures, IT literate and be able to communicate clearly.

Qualifications we offer

Course	Entry requirements	Typical duration	Study mode & assessment	Location
Level 2 AAT Certificate in Accounting	Employed in a relevant industry, A-C GCSE's in Maths & English Accounting	12 months	Day release	Day release to Cambria Business School and Yale Campus
Level 3 AAT Certificate in Accounting	Employed in a relevant industry, A-C GCSE's in Maths & English	12 months	Day release	Day release to Cambria Business School and Yale Campus
Level 4 AAT Professional Diploma in Accounting	Employed in a relevant industry, Level 3 AAT Certificate in Accounting	12 months	Day release	Day release to Cambria Business School and Yale Campus

Did you know

The average starting salary for qualified accountants is expected to be **£28,000** with experienced accountants able to earn upwards of **£40,000**

[Careerswales.gov.wales, 2022]

Top tip

Accountants think about recruiting apprentices over the spring and summer months ready to start an apprenticeship in September

Agriculture



If working indoors isn't something you want to do, then maybe working in the agricultural industry and helping to grow and provide essential resources could be the right career for you!

Agriculture plays a significant role in the Welsh economy, employing a higher percentage of the workforce in Wales than in other parts of the UK, so why not join this vital sector!

[Publications.parliament.uk, 2022]

Apprentices will be assessed in the workplace by our industry served assessing teams and have access to college resources to help with their studies.

Learners completing these qualifications need to have a good level of fitness and strength, be able to work with others and have good communication skills.

Qualifications we offer

Course	Entry requirements	Typical duration	Study mode & assessment	Location
Level 2 Agriculture	Employed in a relevant industry	24 months	Work based assessment	Workplace
Level 3 Agriculture	Employed in a relevant industry	21 months	Work based assessment	Workplace

Industry statistic

90% of the land area of Wales is given over to farming, that's a lot of land to look after!

[Gov.wales, 2021]

Top tip

Contact local businesses and drop off a CV, they might not have ever thought about hiring an Apprentice before!

Animal Care and Management



Do you like animals? Have you ever thought about working with them professionally? In 2021/2022 an estimated 62% of households in the UK had a pet and they all need looking after!

Completing an Apprenticeship in this industry could help you become a zoo worker, dog groomer, veterinary technician, dog handler and so much more. [Statista, 2022]

Apprentices will be assessed in the workplace by our industry served assessing teams and have access to college resources to help with their studies. Learners completing these qualifications need to be calm, patient and good with handling animals of all sizes.

Qualifications we offer

Course	Entry requirements	Typical duration	Study mode & assessment	Location
Level 2 Animal Care (Service Dog Handling or Animal Training)	Employed in a relevant industry	24 months	Work based assessment	Workplace
Level 3 Animal Care (Service Dog Handling or Animal Training)	Employed in a relevant industry	24 months	Work based assessment	Workplace
Level 2 Animal Care (Animal Care & Welfare)	Employed in a relevant industry	24 months	Work based assessment	Workplace
Level 3 Animal Care (Animal Care & Welfare)	Employed in a relevant industry	24 months	Work based assessment	Workplace
Level 2 Animal care (Dog Grooming)	Employed in a relevant industry	24 months	Work based assessment	Workplace
Level 3 Animal care (Dog Grooming)	Employed in a relevant industry	24 months	Work based assessment	Workplace
Level 2 Animal Care (zoos/wildlife)	Employed in a relevant industry	24 months	Work based assessment	Workplace
Level 3 Animal Care (zoos/wildlife)	Employed in a relevant industry	24 months	Work based assessment	Workplace
Level 2 Veterinary Care Assistant	Employed in a relevant industry	24 months	Work based assessment	Workplace

Qualifications we offer

Course	Entry requirements	Typical duration	Study mode & assessment	Location
CQ Level 3 Diploma in Veterinary Nursing - Small Animal Practice	<p>Employed in a relevant industry teaching practice and allocated a clinical coach.</p> <p>Minimum of 5 GCSE's at grade C / 4 or above, including Maths, English language and science.</p>	33 Months	Work based assessment, examinations & day release	In the workplace & Northop

Did you know...

Job openings for vet nursing related industries are expected to rise in the next few years

[Source - Careers Wales, 2023]

Automotive



The Automotive Industry is an ever growing industry always on the lookout for new talent to join the sector

We offer a wide range of Apprenticeship qualifications to suit both light vehicle and heavy vehicle maintenance and diagnostics alongside shorter courses to keep industry knowledge upto date such as Advanced Driver Assist Systems (ADAS) and Hybrid/Electric Vehicle courses upto L4.

Apprentices will spend time at our recently refurbished state of the art facilities at our Deeside and Bersham Road campus for day release or assessment as well as being assessed onsite by our industry served assessing teams.

Motor vehicle Apprentices should have a keen interest in cars and other vehicles and be able to work quickly and efficiently.

Qualifications we offer

Course	Entry requirements	Typical duration	Study mode & assessment	Location
VCQ Level 2 light vehicle maintenance and repair	Employed in a relevant industry	24 months	Work based assessment & day release	Workplace & Deeside or Bersham Road
VCQ Level 3 light vehicle maintenance and repair	Employed in a relevant industry	18 - 24 months	Work based assessment & day release	Workplace & Deeside or Bersham Road
VCQ Level 2 heavy vehicle maintenance and repair	Employed in a relevant industry	24 months	Work based assessment & day release	Workplace & Deeside or Bersham Road
VCQ Level 3 heavy vehicle maintenance and repair	Employed in a relevant industry	18 - 24 months	Work based assessment & day release	Workplace & Deeside or Bersham Road

Did you know

Expected future demand for Vehicle Technician and related jobs is high compared to other jobs in Wales

[Careerswales.gov.wales, 2022]

Top tip

Try contacting local companies directly if you are looking for an apprenticeship or keep an eye out for College organised recruitment events if you are a full time student

Beauty and Nail Services



An Apprenticeship is a popular way to get into the beauty and nail industry, you gain invaluable experience while working towards a nationally recognised qualification all while earning a wage!

Apprentices will be trained in their individual salons learning the core skills and will be assessed in the workplace by our industry served assessing teams.

Learners in this industry will need to be friendly, creative and be able to put clients at ease.

Qualifications we offer

Course	Entry requirements	Typical duration	Study mode & assessment	Location
VTCT Level 2 Diploma in Beauty Therapy	Employed in a relevant industry	18 months	Work based assessment	Workplace
VTCT Level 3 Diploma in Beauty Therapy	Employed in a relevant industry	18 months	Work based assessment	Workplace
VTCT Level 2 Diploma in Nail Services	Employed in a relevant industry	18 months	Work based assessment	Workplace
VTCT Level 3 Diploma in Nail Services	Employed in a relevant industry	23 months	Work based assessment	Workplace

Industry statistic

In 2017 the hair and beauty sector contributed up to £283 million a year to the Welsh economy

[Businessnewswales.com, 2017]

Top tip

Try contacting local salons directly if you are looking for an apprenticeship or keep an eye out for College organised recruitment events if you are a full time student

Business Administration



Business Administration Apprenticeships can be the first step into a huge range of industries and this qualification will give you the skills you need to succeed in the world of work and future career. You will often be required to work as part of a team and interact with all other departments on a regular basis.

Apprentices will be assessed in the workplace by our industry served assessing teams, learners completing these qualifications need to be understanding, organised and have excellent communication skills.

Qualifications we offer				
Course	Entry requirements	Typical duration	Study mode & assessment	Location
City & Guilds Level 2 Diploma in Business Administration	Employed in a relevant industry	15 months	Work based assessment	Workplace
City & Guilds Level 3 Diploma in Business Administration	Employed in a relevant industry	15 months	Work based assessment	Workplace
City & Guilds Level 4 Diploma in Business Administration	Employed in a relevant industry	15 months	Work based assessment	Workplace

Did you know

Qualified administrative assistants can expect to be paid between £17,000 and £23,000 per annum depending on experience

[Careerswales.gov.wales, 2022]

Top tip

Keep an eye on our Coleg Cambria Job Shop for Administration Apprenticeships, they can start any time of year!



Canllaw
Prentisiaethau
Apprenticeships
Guide



0300 30 30 006 WWW.CAMBRIA.AC.UK

Childcare



If you enjoy working with children, a childcare apprenticeship could be the perfect career for you!

People studying towards this qualification need to be working in regulated childcare settings with families and children under the age of 8 and/or NHS children's services for those working with families and children aged 0-19.

Apprentices will attend workshops and learn the core knowledge as well as being assessed in the workplace by our industry served assessing teams.

Learners in this industry will need lots of energy, creativity and be able to work well as part of a team.

Qualifications we offer

Course	Entry requirements	Typical duration	Study mode & assessment	Location
Level 2 Children's Care, Play, Learning and Development	Employed in a relevant industry as an assistant in a childcare setting	16 months	Workbased assessment and workshop attendance	In the workplace & off the job
Level 3 Children's Care, Play, Learning and Development	Employed in a relevant industry in a childcare setting in a supervisory role	18 months	Workbased assessment and workshop attendance	In the workplace & off the job
Level 4 Professional Practice in Children's Care, Learning and Development	Employed in a relevant industry in a senior supervisory role in a childcare setting	21 months	Workbased assessment and workshop attendance	In the workplace & Deeside or Yale
Level 4 Preparing for Leadership and Management in Children's Care, Learning and Development	Employed in a relevant industry in a management role in a childcare setting	24 months	Workbased assessment and workshop attendance	In the workplace & Deeside or Yale
Level 5 Leadership and Management in Children's Care, Learning and Development	Employed in a relevant industry	9 months	Workbased assessment and workshop attendance	In the workplace & Deeside or Yale

Industry statistic/salary expectations

Expected future demand for Nursery Assistant and related jobs is high compared to other jobs in Wales

(EMSI, 2022)

Top tip

Try contacting local companies directly if you are looking for an apprenticeship or keep an eye out for College organised recruitment events if you are a full time student

Construction - Civil Engineering and Site Supervision



Civil engineers plan, manage, supervise and design large building projects including roads, tunnels, water systems, railways, airports and power stations. They work closely with site managers and supervisors who run the day to day operations of a construction project such as recruiting staff, organising sub-contractors and making health and safety regulations are adhered to.

Construction Apprentices will spend time at our recently refurbished state of the art facilities at our Bersham Road site for day release teaching programmes. Assessment will take place onsite by our industry served assessing teams.

Apprentices studying and working in this sector will be required to have good organisational skills, communication management skills and a range of work for qualifications to be under taken.

Qualifications we offer

Course	Pathways	Entry requirements	Typical duration	Study mode & assessment	Location
Level 3 Diploma in Construction and The Built Environment	<ul style="list-style-type: none"> Construction Contracting Operations, Built Environment Design Civil Engineering for Technicians. 	GCSE A-C or level 4-9 in Maths and English	24 months	Work based assessment and day release	Bersham Road
Level 4 Diploma in Construction Site Supervision	<ul style="list-style-type: none"> Building and Civil Engineering Highways and maintenance Repair Residential Development Conservation. 	GCSE A-C or level 4-9 in Maths and English	24 months	Work based assessment and day release	Bersham Road

Top tip

Try contacting local companies directly if you are looking for a construction apprenticeship, most employers in this industry will start recruitment at the end of spring and over summer. Full time college students can keep an eye out for college organised recruitment events to help find an Apprenticeship

Construction - Trades, Plumbing and Electrical Installation



The UK construction sector is a multi billion pound industry and construction apprentices make up a big part of the workforce across various trade areas of construction.

This sector is a great opportunity for learners who prefer being hands on in their work and can lead to more technical or managerial roles.

Construction Apprentices will spend time at our recently refurbished state of the art facilities at our Deeside or Bersham Road sites for day release teaching programmes. Assessment will take place onsite by our industry served assessing teams.

Students wanting to study towards a construction trades, plumbing or electrical installation qualification may be able to shorten the length of the programme if they have completed a foundation year full time at college prior to gaining employment as an apprentice. Trade & building employers need to cover a wide range of work within their trade sector to meet the evidence requirements of the qualifications.

Apprentices studying a construction qualification will be required to do a mix of physical tasks onsite in the workplace and will need to be precise in their work.

Qualifications we offer

Course	Entry requirements	Typical duration	Study mode & assessment	Location
Level 3 Building Services Engineering - Electrotechnical installation	Employed in a relevant industry, GCSE A-C (9-4) in Maths, English & Technical Subject*	48 months	Work based assessment and day release	Deeside & Bersham Road
Level 3 Building Services Engineering - Heating and Ventilating Installation Craftsperson	Employed in a relevant industry, GCSE A-C (9-4) in Maths, English & Technical Subject*	48 months	Work based assessment and day release	Deeside
Level 3 Building Services Engineering - Plumbing and Heating	Employed in a relevant industry, GCSE A-C (9-4) in Maths, English & Technical Subject*	48 months	Work based assessment and day release	Deeside & Bersham Road

*For example - science or design technology

Qualifications we offer

Course	Entry requirements	Typical duration	Study mode & assessment	Location
Level 3 Construction - Architectural Joinery	Employed in a relevant industry, GCSE A-D (9-3) in Maths, English & Technical Subject*	36 months	Work based assessment and day release	Deeside & Bersham Road
Level 3 Construction - Site Carpentry	Employed in a relevant industry, GCSE A-D (9-3) in Maths, English & Technical Subject*	36 months	Work based assessment and day release	Deeside & Bersham Road
Level 3 Construction - Bricklaying	Employed in a relevant industry, GCSE A-D (9-3) in Maths, English & Technical Subject*	42 months	Work based assessment and day release	Deeside & Bersham Road
Level 3 Construction - Solid Plastering	Employed in a relevant industry, GCSE A-D (9-3) in Maths, English & Technical Subject*	42 months	Work based assessment and day release	Bersham Road
Level 3 Construction - Painting and Decorating	Employed in a relevant industry, GCSE A-D (9-3) in Maths, English & Technical Subject*	36 months	Work based assessment and day release	Bersham Road

*For example - science or design technology

Top tip

Try contacting local companies directly if you are looking for a construction apprenticeship, most employers in this industry will start recruitment at the end of spring and over summer. Full time college students can keep an eye out for college organised recruitment events to help find an Apprenticeship

Customer Service, Contact Centre and Advice & Guidance



A businesses first impression is really important and people working in customer facing roles have a huge impact on a customers experience!

Apprentices completing these qualifications can be working in a wide range of sectors using different forms of communication including face to face and over the phone.

Apprentices will be assessed in the workplace by our industry served assessing teams and have access to college resources to help with their studies.

Qualifications we offer

Course	Entry requirements	Typical duration	Study mode & assessment	Location
Level 2 Customer Service	Employed in a relevant industry	14 months	Work based assessment	Workplace
Level 3 Customer Service	Employed in a relevant industry	13 months	Work based assessment	Workplace
Level 2 Contact Centre Operations	Employed in a relevant industry	12 months	Work based assessment	Workplace
Level 3 Contact Centre Operations	Employed in a relevant industry	18 months	Work based assessment	Workplace
Level 3 Advice and Guidance	Employed in a relevant industry	18 months	Work based assessment	Workplace
Level 4 Advice and Guidance	Employed in a relevant industry	18 months	Work based assessment	Workplace

Top tip

Keep an eye on our Coleg Cambria Job Shop and Welsh Government Apprenticeship Vacancy Service for opportunities in this sector all year round!

Digital Technologies, Computing and IT

Digital Technologies is currently one of only a few subjects in Wales that you can do a degree apprenticeship in, this sector is growing rapidly and is always on the lookout for new talent!

Learners in this industry need a good eye for detail, the ability to adapt and work as part of a team.

These courses are assessed in the workplace by our industry served teams and can require day release to our Deeside or Yale college sites where learners will have access to state of the art facilities and technology to help their learning.



Qualifications we offer

Course	Entry requirements	Typical duration	Study mode & assessment	Location
Level 2 Diploma in Digital Skills for Business (Business)	Employed in a relevant industry	14 months	Work based	Workplace
Level 3 Diploma in Digital Skills for Business (Business)	Employed in a relevant industry	21 months	Work based	Workplace
Level 2 Diploma in Digital Application Support (Support)	Employed in a relevant industry	14 months	Work based	Workplace
Level 3 Diploma in Digital Application Support (Support)	Employed in a relevant industry	21 months	Work based	Workplace
Level 3 Digital Infrastructure Engineer	Employed in a relevant industry	21 months	Work based	Workplace
Level 4 Digital Infrastructure Engineer	Employed in a relevant industry	21 months	Work based	Workplace
Applied Cyber Security Digital Degree Apprenticeship	Employed in a relevant industry. Assessed on a case by case basis.	3 years	Work based & day release	Yale
Applied Data Science Digital Degree Apprenticeship	Employed in a relevant industry. Assessed on a case by case basis.	3 years	Work based & day release	Yale
Applied Software Engineering Digital Degree Apprenticeship	Employed in a relevant industry. Assessed on a case by case basis.	3 years	Work based & day release	Yale

Engineering and Manufacturing



North Wales has the most technologically advanced manufacturing and engineering firms in the whole of the UK and 34% of North East Wales' employment is in manufacturing. We work closely with over 150 local engineering and manufacturing companies to develop their workforces through Apprenticeships and build industry relevant skills to create a thriving sector.

Engineering Apprentices will spend time at our recently refurbished state of the art facilities at our Deeside or Bersham Road site for day release and assessment as well as being assessed onsite by our industry served assessing teams.

Engineering apprentices will be required to have a high level of maths and english as well as the ability to work precisely.

We recommend that before starting an Engineering Apprenticeship you enrol full time in college to complete a Performing Engineering Operations (PEO) course or Level 3 Enhanced Engineering before looking for an Apprenticeship.

Qualifications we offer

Course	Pathways	Entry requirements	Typical duration	Study mode & assessment	Location
Level 2 Engineering	Engineering, Performing Engineering operations	Employed in a relevant industry, GCSE Maths and English at grade C or above	1 or 2 years to be agreed with employer	Work based assessment & day release	Bersham Road or Deeside
Level 3 Engineering	Engineering Maintenance, Mechanical Manufacture Engineering, Engineering Technical Support, Electrical & Electronic Engineering, Installation & Commissioning	Employed in a relevant industry, Performing Engineering Operations / Foundation Apprenticeship in Engineering, GCSE Maths and English at grade C or above	24 Months	Work based assessment & day release	Bersham Road or Deeside
Level 4 Engineering		Employed in a relevant industry PEO and/or 2 A Level in Maths and science. Or Progression from L3 Apprenticeship	24 Months	Work based assessment & day release	Bersham Road or Deeside

Qualifications we offer

Course	Pathways	Entry requirements	Typical duration	Study mode & assessment	Location
Level 2 Manufacturing		Employed in a relevant industry	18 Months	Work based assessment	In the workplace
Level 2 Diploma in Performing Manufacturing Operations		Employed in a relevant industry	18 Months	Work based assessment	In the workplace
Level 3 Diploma in Processing Industries Operations		Employed in a relevant industry	24 Months	Work based assessment	In the workplace
Level 3 Process Manufacturing		Employed in a relevant industry GCSE Maths and English at grade C or above	2 years	Work based assessment	In the workplace
Level 2, 3 & 4 Business Improvement Techniques		Employed in a relevant industry GCSE Maths and English at grade C or above	18 - 24 months	Work based assessment	In the workplace
FdEng/BEng Advanced Manufacturing Engineering	Electrical, Mechanical	Employed in a relevant industry 3 A Level, inc. B in Maths & Physics BTEC 180cr Dip. (D*D*D*) HNC BTEC 120cr Dip (D *D *) (and entry test)	2 - 3 years	Work based assessment and day release	Deeside
FdEng/BEng Aeronautical and Manufacturing Engineering	Electrical, Mechanical	Employed in a relevant industry 3 A Level, inc. B in Maths & Physics BTEC 180cr Dip. (D*D*D*) HNC BTEC 120cr Dip (D *D *) (and entry test)	2 - 3 years	Work based assessment and day release	Deeside

Industry statistic/salary expectations

The average salary for an engineer is between **£26,000 and £50,000** depending on experience with the opportunity to get even more and progress further in your career

Top tip

Try contacting local companies directly if you are looking for an engineering apprenticeship or keep an eye out for College organised recruitment events if you are a full time student

Equine



If you have a keen interest in horses this could be the perfect opportunity to progress in the industry and gain a nationally recognised qualification or British Horse Society certificates. Pathways within these qualifications include riding, breeding and coaching.

Apprentices will be assessed in the workplace by our industry served assessing teams.

Learners completing these qualifications need to be calm, patient and confident working with horses. You will also need to have a good level of fitness and strength. We offer a wide variety of courses and qualifications in the equine and horse care sector. This is a brief overview, please call us for more information.

Qualifications we offer

Course	Entry requirements	Typical duration	Study mode & assessment	Location
City & Guilds or British Horse Society Level 2 Equine, Horse care, Riding and Coaching	Employed in a relevant industry	18 months	Work based assessment	Workplace
City & Guilds or British Horse Society Level 3 Equine, Horse care, Riding and Coaching	Employed in a relevant industry	18 months	Work based assessment	Workplace
British Horse Society Level 4 Senior care and management	Employed in a relevant industry	18 months	Work based assessment	Workplace

Top tip

Contact local businesses and drop off a CV, they might not have ever thought about hiring an Apprentice before!

Fabrication and Welding



Fabrication and welding is a huge industry that manufactures metal work for a wide variety of industries and uses.

Apprentices will spend time at our recently refurbished state of the art facilities at our Deeside and Bersham Road campus for day release or assessment as well as being assessed onsite by our industry served assessing teams.

Fabrication and welding apprentices should have good practical skills and be able to follow technical information and diagrams.

Qualifications we offer

Course	Entry requirements	Typical duration	Study mode & assessment	Location
Level 2 Fabrication and welding	Employed in a relevant industry	24 months	Work based assessment & day release	Workplace & Deeside or Bersham Road
Level 3 Fabrication and welding	Employed in a relevant industry	18 - 22 months	Work based assessment & day release	Workplace & Deeside or Bersham Road

Did you know

Experienced welders can earn upto £28,000 per year on average

[Careerswales.gov.wales, 2022]

Top tip

Try contacting local companies directly if you are looking for an apprenticeship or keep an eye out for College organised recruitment events if you are a full time student

Floristry



A Floristry apprenticeship will help you develop the skills to sell, arrange and cut flowers. You will need to advise customers on the best products for their needs and will learn about creating floral designs for many events such as birthdays and weddings.

Learners completing these qualifications need to be physically able to meet the demands of working with their hands all day, be able to adapt and have good customer service skills.

This course is assessed in the workplace by our industry served teams.

Qualifications we offer

Course	Entry requirements	Typical duration	Study mode & assessment	Location
Level 2 Floristry	Employed in a relevant industry	18 months	Work based assessment	Workplace
Level 3 Floristry	Employed in a relevant industry	18 months	Work based assessment	Workplace

Top tip

Contact local businesses and drop off a CV, they might not have ever thought about hiring an Apprentice before!

Food Manufacturing



There is a huge number of food manufacturing businesses in North Wales supplying food and drink across the UK and the world!

Apprentices will be assessed in the workplace by our industry served assessing teams and have access to college resources to help with their studies.

More qualifications in Level 2, 3 and 4 are available in the food manufacturing sector, please call us for more information.

Qualifications we offer

Course	Entry requirements	Typical duration	Study mode & assessment	Location
Level 2 Diploma for Proficiency in Food and Drink Operations	Over 16 years. Work in paid employment in the food manufacturing sector for 16 hours a week or more	18 months	Work based assessment	Workplace
Level 2 Diploma for Proficiency in Butchery and Meat Processing	Over 16 years. Work in paid employment in the food manufacturing sector for 16 hours a week or more	18 months	Work based assessment	Workplace
Level 2 Diploma for Proficiency in Food Industry Team Leading	Over 16 years. Work in paid employment in the food manufacturing sector for 16 hours a week or more	18 months	Work based assessment	Workplace
Level 2 Diploma for Proficiency in Baking Industry Skills	Over 16 years. Work in paid employment in the food manufacturing sector for 16 hours a week or more	18 months	Work based assessment	Workplace

Forestry and The Countryside



If you love nothing more than being in the great outdoors, standing under a canopy of trees or walking over a moss-covered woodland floor, then a **Trees and Timber Apprenticeship** is perfect for you.

From unravelling the mysteries of different tree species to understanding how they thrive in diverse ecosystems, you'll delve into the heart of the forest and learn the art of arboriculture, mastering the skills to care for and manage trees in urban and natural landscapes.

Prepare to get your hands dirty with year round hands-on practical work and a need for good communication and team skills.

Qualifications we offer

Course	Entry requirements	Typical duration	Study mode & assessment	Location
Level 2 Trees and Timber	Employed in a relevant industry	18 months	Work based assessment, workbooks and theory work	Workplace
Level 3 Trees and Timber	Employed in a relevant industry, Level 2 or equivalent qualification	21 months	Work based assessment, workbooks and theory work	Workplace

Did you know

The forestry sector in Wales has an annual **Gross Value Added (GVA)** of **£499.3 million** and employs between **8,500** and **11,300** people

[Natural Resources Wales, June 2023]

Top tip

Contact local businesses and drop off a CV, they might not have ever thought about hiring an Apprentice before!

Hairdressing and Barbering



An Apprenticeship is one of the most popular ways to get into the hairdressing and barbering industry, Apprentices will spend time at our purpose built training salons at our Yale or Deeside site and will learn the core knowledge needed to become a barber or hairdresser. Apprentices will also be assessed in the workplace by our industry served assessing teams.

Learners in this industry will need to be friendly, creative and be able to stand for longer periods of time while cutting hair.

Qualifications we offer

Course	Entry requirements	Typical duration	Study mode & assessment	Location
VTCT Level 2 Diploma in Hairdressing	Employed in a relevant industry	12 - 18 months	Day release and work based assessment	Workplace & Deeside or Yale
VTCT Level 3 Diploma in Hairdressing	Employed in a relevant industry	12 - 18 months	Day release and work based assessment	Workplace & Deeside or Yale
VTCT Level 2 Diploma in Barbering	Employed in a relevant industry	12 - 18 months	Day release and work based assessment	Workplace & Deeside or Yale
VTCT Level 3 Diploma in Barbering	Employed in a relevant industry	12 - 18 months	Day release and work based assessment	Workplace & Deeside or Yale

Did you know

In 2017 the hair and beauty sector contributed up to £283 million a year to the Welsh economy

[businessnewswales.com, 2017]

Top tip

Try contacting local salons directly if you are looking for an apprenticeship or keep an eye out for College organised recruitment events if you are a full time student

Health and Social Care



Health and Social Care Apprentices work in a vital industry providing support and care to individuals, enabling them to live as comfortably and independently as possible. The care sector is varied, and Apprentices may support individuals living in settings such as care, residential or nursing homes, in the community in supported living or the individual's own home.

Apprentices undertaking this qualification will gain Core knowledge relating to care, either online, in the apprentice's place of work, or at one of our college sites before their practice is assessed in the workplace.

Those wishing to work in care must be patient, respectful, caring, with good communication skills and able to work as part of a team.

Qualifications we offer

Course	Pathways	Entry requirements	Typical duration	Study mode & assessment	Location
Level 2 health and social care: Core	Adults or Children and Young People or Combined	Employed in a care environment	15 months	Workbased assessment and workshop attendance	Workplace, remote, in college
Level 3 Health and Social Care, Adults:	Adults	Core qualification and Employed in a care environment	16 months	Workbased assessment and workshop attendance	Workplace
Level 3 Health and Social Care, Children and Young People:	Children and Young People (CYP)	Core qualification and Employed in a care environment	16 months	Workbased assessment and workshop attendance	Workplace

Qualifications we offer

Course	Pathways	Entry requirements	Typical duration	Study mode & assessment	Location
Level 4 Professional Practice*	Various pathways to reflect different roles of services	Employed in a relevant industry. Working at Team Leader Level	18 months	Day release with written assignments and work based assessment	
Level 5 Leadership and Management in Health and Social Care: Practice	Generic	Level 4 Preparing for leadership and management. Deputy Manager or Registered Manager	24 months	Assessments with the assessor on the workplace. Business improvement project.	

*These qualifications can be done as a combination

Did you know

People working in the care sector are now required to register with Social Care Wales. If they don't already hold a relevant qualification, they will have three years from initial registration to complete their Core and Practice qualifications in order to be able to renew their registration

Horticulture and Environmental Conservation



Jobs in this sector can vary from Greenkeeping to Production Horticulture in a garden centre, from landscaping to be a Park Ranger on a mountain side as well as many more opportunities. Apprentices will have the chance to work closely with experts in the industry and learn while working. This is a huge industry and companies are looking to develop their environments further so is a great area to develop.

Apprentices will be assessed in the workplace by our industry served assessing teams and have access to college support.

Many of these Apprenticeship opportunities will give you the opportunity to be working outside in all weathers and working with some fantastic teams.

Qualifications we offer

Course	Pathways	Entry requirements	Typical duration	Study mode & assessment	Location
Level 2 Horticulture	Landscaping, Parks, Gardens & Green Spaces. Production Horticulture, Sport Turf	Employed in a relevant industry	24 months	Work based assessment	Workplace
Level 3 Horticulture	Landscaping, Parks, Gardens & Green Spaces. Production Horticulture, Sport Turf	Employed in a relevant industry	24 months	Work based assessment	Workplace
Level 4 Horticulture		Employed in a relevant industry	30 months	Work based assessment	Workplace
Level 2 Environmental Conservation		Employed in a relevant industry	24 months	Work based assessment	Workplace
Level 3 Environmental Conservation		Employed in a relevant industry	18 months	Work based assessment	Workplace

Qualifications we offer

Course	Pathways	Entry requirements	Typical duration	Study mode & assessment	Location
Level 2 Trees and Timber		Employed in a relevant industry	18 months	Work based assessment	Workplace
Level 3 Trees and Timber		Employed in a relevant industry and hold the Level 2 qualification	21 months	Work based assessment	Workplace

Did you know

Did you know we can now deliver greenkeeping Apprenticeships to people who are employed through English companies?

Top tip

Contact local businesses and drop off a CV, they might not have ever thought about hiring an Apprentice before!

Hospitality and Catering



The tourism sector in North Wales is worth an estimated £1.6 billion annually, a huge part of which is contributed by hospitality and catering businesses.

[Businesswales.gov.wales, 2020]

Hospitality and catering covers a wide range of courses from Professional Cookery to Hospitality Skills and Housekeeping qualifications.

Apprentices will be assessed in the workplace by our industry served assessing teams, learners completing these qualifications need to be good with people, work well in teams and have excellent communication skills.

Qualifications we offer

Course	Entry requirements	Typical duration	Study mode & assessment	Location
Level 2 Food & Beverage Service	Employed in a relevant industry	15 months	Work based assessment	Workplace
Level 2 Food Production & Cooking	Employed in a relevant industry	15 months	Work based assessment	Workplace
Level 2 Front of House Reception	Employed in a relevant industry	14 months	Work based assessment	Workplace
Level 2 Hospitality Services	Employed in a relevant industry	14 months	Work based assessment	Workplace
Level 2 Housekeeping	Employed in a relevant industry	14 months	Work based assessment	Workplace
Level 2 Kitchen Services	Employed in a relevant industry	14 months	Work based assessment	Workplace
Level 2 Licensed Hospitality skills	Employed in a relevant industry	15 months	Work based assessment	Workplace
Level 2 Professional Cookery	Employed in a relevant industry	18 months	Work based assessment	Workplace
Level 3 Hospitality Supervision and Leadership	Employed in a relevant industry	18 months	Work based assessment	Workplace

Qualifications we offer

Course	Entry requirements	Typical duration	Study mode & assessment	Location
Level 3 Professional Cookery	Employed in a relevant industry	21 months	Work based assessment	Workplace
Level 3 Licensed Hospitality Management Skills	Employed in a relevant industry	18 months	Work based assessment	Workplace
Level 4 Hospitality Management	Employed in a relevant industry	24 months	Work based assessment	Workplace

Did you know...

There are more hospitality businesses in Wales now than when the COVID-19 pandemic started

[BusinessLive, 2022]

Top tip

Contact local businesses and drop off a CV, they might not have ever thought about hiring an Apprentice before!

Management

If you work in management and want a qualification to back up your skills, a management Apprenticeship can be tailored to suit your workplace and a huge variety of industries for people with all levels of experience.

Learners will work towards completing an Institute of Leadership and Management (ILM) qualification through work based assessment and have the opportunity to attend classroom based training at our Northop Business School to boost skills and knowledge that can be applied to day to day management tasks.

Learners completing these qualifications need to be understanding, organised and have excellent communication skills.

Qualifications we offer

Course	Entry requirements	Typical duration	Study mode & assessment	Location
ILM Level 2 Diploma in Team Leading	Employed in a relevant industry	15 months	Day release (optional) and work based assessment	Workplace & Cambria Business School (optional)
ILM Level 3 Diploma in Management	Employed in a relevant industry	17 months	Day release (optional) and work based assessment	Workplace & Cambria Business School (optional)
ILM Level 4 Diploma in Leadership & Management	Employed in a relevant industry	18 months	Day release and work based assessment	Workplace & Cambria Business School
ILM Level 5 Diploma in Leadership & Management	Employed in a relevant industry	21 months	Day release and work based assessment	Workplace & Cambria Business School

Did you know

The average starting salary for managers is expected to be £20,000 with experienced senior managers able to earn upwards of £40,000

[Careerswales.gov.wales, 2022]

Playwork



In this industry learners will be working with children aged 5 to 15 in a variety of settings to help promote healthy development, the wellbeing of children and to support children's freely chosen self directed play.

Apprentices will spend time learning the core knowledge and principles of playwork in the workplace as well as being assessed in by our industry served assessing teams
Learners in this industry will need lots of energy, creativity and be able to work well as part of a team.

Qualifications we offer

Course	Entry requirements	Typical duration	Study mode & assessment	Location
Level 2 Playwork	Employed in a relevant industry working with children aged 5 - 15 in a play environment	12 months	Workbased with assessment in the workplace	Workbased
Level 3 Playwork	Employed in a relevant industry working with children aged 5 - 15 in a play environment	16 months	Workbased with assessment in the workplace	Workbased

Industry statistic/salary expectations

Once qualified, workers in this sector can expect an average annual salary of between £15,000 and £22,000 depending on experience

Top tip

Try contacting local companies directly if you are looking for an apprenticeship or keep an eye out for College organised recruitment events if you are a full time student

Social Media and Digital Marketing



Social media and digital marketing is becoming a core part of businesses in all industries. The use of digital media to attract and engage with current and potential customers, to raise brand awareness, and to generate rich analytical data, is essential in today's business environment.

This course is assessed in the workplace and in the classroom by our industry served teams and requires day release to our Deeside college site where learners will have access to state of the art facilities and technology to help their learning.

Qualifications we offer

Course	Entry requirements	Typical duration	Study mode & assessment	Location
Level 3 Social Media and Digital Marketing Apprenticeship	Employed in a relevant industry	12 months	Work based & day release	Deeside
Level 4 Diploma in Digital Marketing Apprenticeship	Employed in a relevant industry	24 months	Work based & day release	Deeside

Did you know

This course is assessed in the workplace and in the classroom by our industry served teams and requires day release to our Deeside college site where learners will have access to state of the art facilities and technology to help their learning.

[Statista, 2022]

Top tip

Contact local businesses and drop off a CV, they might not have ever thought about hiring an Apprentice before!

Supporting Teaching and Learning



Jobs in this sector support teachers in primary and secondary schools to help pupils with their learning either one to one or in small groups. Apprentices will work closely with teaching staff and parents to ensure pupils get the most out of their time in school

Apprentices will spend time learning the core knowledge as well as being assessed in the workplace by our industry served assessing teams.

Learners in this industry will need lots of energy, patience and be able to work well as part of a team.

Qualifications we offer

Course	Entry requirements	Typical duration	Study mode & assessment	Location
Level 2 Supporting teaching and learning in schools	Employed in a school/ education setting	16 months	Workbased with assessment in the workplace	In the workplace
Level 3 supporting teaching and learning in schools	Employed in a school/ education setting	16 months	Workbased with assessment in the workplace	In the workplace

Industry statistic

688 job openings for Teaching Assistant and related jobs are expected each year in Wales until 2027

[Careerswales.gov.wales, 2022]

Top tip

Try contacting local schools directly if you are looking for an apprenticeship or keep an eye out for College organised recruitment events if you are a full time student

Warehousing and Storage



Warehousing and logistics is one of the fastest growing sectors in the UK since Brexit and the boom in online shopping. People in this industry help with the movement of goods to customers by checking incoming deliveries and helping to load vehicles for distribution.

This course is assessed in the workplace by our industry served teams.

Warehousing and storage Apprentices will be required to have excellent communication, time management and organisational skills.

Qualifications we offer

Course	Entry requirements	Typical duration	Study mode & assessment	Location
Level 2 Warehousing and storage	Employed in a relevant industry	12 - 18 months	Work based assessment	In the workplace
Level 3 Warehousing and storage	Employed in a relevant industry	12 - 18 months	Work based assessment	In the workplace
Level 4 Warehousing and storage	Employed in a relevant industry	12 - 18 months	Work based assessment	In the workplace

Industry statistic/salary expectations

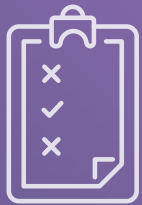
A qualified warehouse operative can expect to earn between £16,500 and £22,000 per year depending on experience

[Careerswales.gov.wales, 2022]

Top tip

Try contacting local companies directly if you are looking for an apprenticeship or keep an eye out for College organised recruitment events if you are a full time student





WWW.CAMBRIA.AC.UK
0300 30 30 006

