



COLEG
CAMBRIA

2024 ENTRY



CAMBRIA COURSE GUIDE

Contents

Cambria Information

Principal's Welcome	03
Parents, Carers & Guardians	04
Which Level of Study is Best for me?	05
Level 3 Learning	06
Learn in Welsh	07
Student Support	08
How to Apply	11
Inclusion & Learning Support	12
Learner Experience	16
Elite Sport	18
English and Maths	19
Advanced Skills Baccalaureate Wales	20
Foundation Learning	21
Apprenticeships	22
Jobs Growth Wales+	24
What Can I Study?	26
Cambria University Centre	99
Coming Soon	100
Find Us	back cover

A Levels

Welcome to A Levels	31
Our Sites & Facilities	32
Hear from our Students	34
A Level Courses	35



Practical Courses

Welcome to Practical Courses	55
Our Sites & Facilities	55
Hear from our Students	58
Access to Higher Education	60
Beauty, Spa & Complementary Therapies	61
Business, Management & Leadership	62
Childcare, Childhood Studies & Playwork	63
Construction & Building Services	64
Construction - Technical	65
Construction - Trades	66
Creative Industries - Art & Design	67
Creative Industries - Creative Media Production	68
Creative Industries - Music Performance & Production	69
Creative Industries - Performing Arts & Backstage Theatre Production	70
Digital Technologies, Computing & IT	71
Engineering - Fabrication & Welding	72
Engineering - Manufacturing & Maintenance	73
Engineering - Motor Vehicle	74
Esports	75
Fashion Business & Retail	76
Floristry	77
Hairdressing & Barbering	78
Health & Social Care	79
Hospitality & Catering	80
Independent Living Skills	81
Neurodiverse-centered Courses	82
Science - Forensic & Criminal Investigation	83
Sport & Fitness	84
Step into Cambria	85
Travel & The Visitor Economy	86
Uniformed Public Services	87

Land-based Courses

Welcome to Llysfasi	89
Agricultural Engineering	91
AGCO Diploma Training Scheme	92
Kubota Diploma Training Scheme	93
Agriculture & Precision Agriculture	94
Forestry & The Countryside	95
Welcome to Northop	96
Animal Care & Management	98

Principal's Welcome



Welcome to Coleg Cambria where you will study in excellent facilities, using the latest technology, supported by specialist staff who will inspire you to succeed. We are an award winning college which actively encourages all our learners through our inclusive approach to support them to be the best they can be.

You might worry about moving from a smaller school to what feels like a big college but you will be supported every step of the way. We pride ourselves not only on the classroom delivery and extra in-class support we provide, but also the additional dedicated pastoral support that you will receive from your personal Progress Coach to ensure you achieve your programme.

In recent years we have increased wrap-around support outside of the classroom to ensure you achieve your goals with dedicated support for your individual needs from our health and wellbeing staff and resilience coaches. You will also have access to a wide range of free sports and wellbeing activities through our Active Cambria programme, as well as the opportunity to participate in a wide range of clubs and Student Voice activities.

All of our students can also get a free breakfast and lunch from our food outlets on all sites to help them have a great start to the day and keep focused throughout the day!

We are here to help you gain the right skills and qualifications to prepare you for life after college, whether you want to go on to study at university level, begin an apprenticeship or start a great career.



Sue Price
Principal

2023/24 Open Events

**TAP
OR
CLICK
HERE**



Open events will take place throughout the year

Visit the link for times and dates

**0300 30 30 007 | www.cambria.ac.uk
studentservices@cambria.ac.uk**

Parents, Carers and Guardians



At Cambria, we are committed to building strong links with parents, carers and guardians to support your child throughout their time at college.

Your child will be encouraged to reach their full potential, increasing their confidence and providing them with real experiences to ensure when they leave they are ready for their next step. Students study in excellent facilities, using the latest technology taught by expert staff. We will support your child to gain the right skills and qualifications to prepare them for life after college.

Our relationship with students includes you as their parent, carer or guardian. We will regularly communicate with you via reports and parents evenings to keep you informed of your child's progress. Each student will be supported with a Progress Coach to ensure they stay on track to succeed and will receive regular one to one tutorials. You can contact them directly at any point in the year should you have any concerns or queries relating to your child's progress in college.



We have a disciplinary process designed to ensure that the college environment is friendly, safe, civilised and focused on success. We have a zero tolerance approach to bullying and harassment.

Safeguarding

Cambria is committed to your child's safety and well-being whilst both in and out of college during their time as a student with us. If they feel that they are at risk or have any concerns they can speak to any member of staff at the College, who will support them.

If you or your child have any concerns please contact the Safeguarding Team:

0300 30 30 009
safeguarding@cambria.ac.uk
or pop into Student Services.



English & Maths (Skills for Adults)

If you are looking to take those first steps and learn basic or GCSE Maths and English skills, we offer a range of bite sized, FREE*, confidence boosting courses based out in communities across Wrexham and Flintshire and at Cambria sites.

0300 30 30 007
skillsforadults@cambria.ac.uk

*subject to availability

Which Level of Study is Best for Me?



We offer a range of full time courses from Entry Level to Higher Level, so there is sure to be a course that suits you at a level that will help you progress.

LEVEL / QUALIFICATION	ENTRY REQUIREMENTS	YOUR FUTURE
STEP INTO CAMBRIA For students with no GCSEs (or very low grades), or who have missed a lot of education.	No formal entry requirements.	ENTRY LEVEL or Level 1 courses or Jobs Growth Wales+
ENTRY LEVEL Prepares students for Level 1.	No formal entry requirements but we would encourage you to do the very best that you can in your exams.	LEVEL 1 courses or Jobs Growth Wales+
LEVEL 1 For students starting to learn a new skill; prepares you for Level 2.	Typically you will need 4 GCSEs at E or Grade 2 or above	LEVEL 2 courses, Jobs Growth Wales+, apprenticeship or employment
LEVEL 2 Prepares students for Higher Level courses.	Typically you will need 4 GCSEs at D or Grade 3 or above	LEVEL 3 courses, apprenticeship or employment
LEVEL 3 Prepares students for university, work or a Higher Apprenticeship.	Typically you will need 5 or more GCSEs at A*-C or Grade 4 or above	LEVEL 4 courses, university, higher apprenticeship or employment
A LEVELS Advanced academic courses preparing students for university or work. Many AS level subjects require a B grade or above at GCSE in the subjects being taken or related subjects.	Typically you will need 5 GCSEs at A*-C or Grade 4 or above	
JOBS GROWTH WALES+ Work placement for 16-19 year olds. Entry via Working Wales Advisor or Direct Self Referral. Progression can be onto a college course or apprenticeship (at various levels) or into employment.		APPRENTICESHIPS Employed/work-based learning training. Various pathways and levels available. Please search here for vacancies web.cambria.ac.uk/job-shop Contact the Cambria for Business team for further information 0300 30 30 006

Please note that some vocational pathways may require a relevant Level 2 or experience in the sector. Contact us for further information.

Level 3 Learning

Level 3 courses give you access to university, higher or degree apprenticeships or skilled employment. Qualifications include A Levels, Vocational/Practical courses, Apprenticeships and Access to Higher Education courses.

A Levels

These are two year academic programmes studied at either Deeside Sixth or Yale Sixth, with learners usually choosing a minimum of three and a maximum of four (if you achieve five or more A/A*/7-9 grades at GCSE) A Level subjects. A Levels are typically assessed via exams. All A Level students will also enrol on to the Advanced Skills Baccalaureate qualification which will be studied as an additional A Level.

Vocational / Practical Qualifications

These are mainly two year Vocational qualifications, equivalent to studying three A Levels. These courses blend practical, career focused skills and academic study to prepare you for direct entry into employment, university or apprenticeships. Most of these courses have a work experience element attached to them.

Vocational/Practical courses are typically assessed through coursework and observation of competency in practical skills. Many students taking a two year Level 3 Vocational qualification will study the Advanced Skills Baccalaureate, although staff will clarify whether this applies to you during the application process.

Apprenticeships

These work-based training programmes give you the skills, knowledge and competencies needed to progress in your chosen career. Apprentices work for an employer and earn a salary as well as studying alongside. Some apprentices are assessed at the workplace and others attend college one day per week.

Access to Higher Education (HE)

Access to Higher Education courses are for people who left school without the usual qualifications and have gained substantial life experiences since leaving school. They prepare you to study for a degree after successful completion.



Learn in Welsh



If you have studied through the medium of Welsh or bilingually at school you can continue to do so at Cambria.

You can do the following in Welsh:

- Submit written work and receive bilingual notes
- Follow specific courses or modules
- Complete work experience in a range of Welsh speaking environments
- Assessments, entry interviews, tutorials, mentoring and meetings

If you have no Welsh language skills or would like to develop existing skills, there are also a great deal of opportunities for you to improve and gain confidence in using Welsh within your chosen subject area.

Hear from our students

Cymraeg



Siân Hewson

Studied A Levels in Welsh, History and Maths at Deeside Sixth

Currently studying Welsh at the University of Bangor

“I had a really good experience learning Welsh. I felt supported at all times by my tutors.

“Welsh was my favourite subject and my grades highlight this. I’d recommend learning Welsh to anyone considering it because it’ll be really helpful in the workplace.”



Student Support

Based at all sites at Cambria, we are a welcoming and experienced team, who can offer information, advice and guidance on all aspects of your journey here at college.

Information, Advice and Guidance

We are your dedicated support hub for all things academic and personal. Our experienced team is here to guide you through your educational journey, connecting you to all the right areas of support, offering assistance with course selection, career planning, and personal development.

Need help with transport, financial aid, or wellbeing? We've got you covered. At Cambria, we're committed to ensuring every student thrives. Reach out to us today and let us help you make the most of your college experience!



Transport

We provide a network of buses to transport our full time students to our six sites daily.

If you travel by bicycle you will have access to bike racks at most sites. If you live 3 miles or more from your college site, you may be eligible to travel free of charge*.

transport@cambria.ac.uk

Safeguarding

Cambria is committed to your safety both inside and outside of College whilst you are a student with us. We have a dedicated safeguarding team within Student Services to help and support you.

safeguarding@cambria.ac.uk

Financial Support

Our Student Services team can help with financial support at College. If you are a full time student aged 16-18 and living in Wales, you may be eligible for Education Maintenance Allowance (EMA). If you are 19, or over, you may be eligible for a Welsh Government Adult Learning Grant. You may also be eligible for the Financial Contingency Fund (FCF) which could help pay for your uniform, kit, trips or course books.

studentservices@cambria.ac.uk

Careers Advice and Guidance

Our professional Advisers provide help to prospective students on choosing the right course as well as advice and guidance once you are a student at Cambria. By using up to date Labour Market Information and trends, they can help you research careers in all job sectors.

Applying to university? Our Career Advisers can help you explore prospective universities and support you with your application to UCAS.

careers@cambria.ac.uk

*Subject to eligibility. Details correct at the time of printing, please visit our website for the latest information.



Accessibility

We will work with you to ensure that you have full access on site whilst on your course. This may include us providing additional equipment, personal care plans or fire evacuation plans. To ensure that you have the best transition and planning, please contact our support coordinators to discuss your requirements.

learning.support@cambria.ac.uk

Swap Don't Drop

Feel like you have chosen the wrong course or career pathway? Don't worry, Student Services are on hand to give you some extra information, advice and support to get you on the right course for your future plans. Either speak to your Progress Coach or call into Student Services for more information.

studentservices@cambria.ac.uk

Free Breakfast

Any student at any Cambria site is entitled to collect a FREE breakfast from any of the College's eating outlets, Monday - Friday 8am - 9.15am. This consists of a slice of toast and a drink of your choice.

Students must present a valid College ID card and be wearing their Cambria lanyard.

Childcare

As a Cambria student, you may be eligible to receive financial assistance towards the cost of childcare, if you have pre-school children.

studentservices@cambria.ac.uk



Toybox Nursery at the Deeside site is for children from 12 weeks to 5 years old. The fully equipped nursery has excellent facilities and qualified, experienced

staff to ensure children have the best possible start.

01978 267159

toybox@cambria.ac.uk

toybox-nursery.cambria.ac.uk

Student Support



Progress Coaches (PC)

Supporting you is one of our top priorities. That's why, from the moment you join Cambria, you'll receive tailored support from your Progress Coach on a regular basis.

Through weekly sessions, the MADE programme (Maximising Achievement and Developing Everyone) will develop your skills & knowledge beyond your qualification at Cambria.

Your PC will coach and support you to learn, revise, and organise effectively, developing your independence, so you can achieve the best outcomes for your future ambitions.

You will also have the opportunity to meet with your PC one-to-one to review your progress and set goals and targets. This can include working together with Cambria's support services to support your wellbeing and academic progress.

Linked to your subject area, your PC will be your source of support, and advocate from day one. Helping you settle into college, guiding you through your course and wider college life, offering support through any difficult times, monitoring progress closely, supporting you in preparing for your next steps, and of course, celebrating success!

Calon Cambria: Volunteering and Fundraising at Cambria

Cambria recognises the importance of giving back to our communities and the positive impact on society of charity initiatives. Through Calon, we encourage and support volunteering opportunities and charity fundraising for students and colleagues for any local registered and approved charities together with supporting national fundraising days and emergency appeals.

calon@cambria.ac.uk

Chaplaincy

The Chaplaincy is here for everyone: for people of all faiths, and none. We are here to educate and to celebrate the diversity of religions and cultures in our local and global communities. We also have purpose built spaces where you can pray and reflect.

chaplaincy@cambria.ac.uk

Carers and Young Carers

The College is fully aware of the challenges faced by carers and young carers and is committed to improving your experience and opportunities as a Cambria student. We have achieved the Quality Standard in Carer Support. For more information, please contact:

studentservices@cambria.ac.uk

Resilience Sessions and Counselling

Our Resilience Coaches help learners identify and overcome barriers to learning. Offering either bespoke one to one sessions, or group sessions, they will assist you to explore strategies and techniques which should help you. Developing your resilience and wellbeing will enable you to have a more positive and fulfilling college experience. They can also refer you to other support services, including counsellors and external agencies.

How to Apply

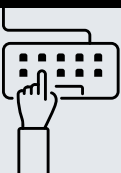


Applying to study at Cambria is really easy, just follow these simple steps and you'll be on the journey to success in no time at all.

Find your course and apply online

When you've found the perfect course you want to study, you can apply directly online from the course page at www.cambria.ac.uk

If you need help with any part of the application process, our Admissions team will be more than happy to help you with queries or questions. admissions@cambria.ac.uk



Stage 2

Once we have received your application, you will receive an email with a form to complete and send back to us.



Decision of offer

Once we have received your Stage 2 form, your application will be passed to the curriculum teams.

If your application is successful you will receive an offer via email. This means that you've got a place on a course with us if you meet the entry requirements.



New Student Day

Attend your New Student Day event in June to get a taster of the College and your course.



Confirm Your Place

You will receive an email to confirm your place online on GCSE Results Day in August.



Start Date Info

You will receive an email with your start date and other useful information.



Inclusion and Learning Support

Cambria is committed to inclusion for all learners.

Mental Health & Wellbeing Support

We know that mental health and wellbeing can have a significant impact on your college experience. The Mental Health & Wellbeing Team are passionate about providing the best support and resources that promote your wellbeing and good mental health.

We provide:

- Wellbeing Hubs and pop up hubs - safe, quiet locations for you to relax and take part in mindful activities.
- Mental health and wellbeing activities throughout the year.
- Support from dedicated trauma-informed wellbeing staff across all college sites.
- One-to-one mental health and wellbeing sessions and support, tailored to meet your needs.
- Support with overcoming anxiety related to socialising, accessing college or travel to college.
- Inclusive support plans and strategies to help you succeed.
- Referrals, social signposting and multi agency working.
- Bespoke transition support and summer workshops.

wellbeing@cambria.ac.uk

Specialist Tutor Support

Our approach is tailored to you and your individual needs. If you have an additional learning need, our specialist tutors can support your independent learning.

They can help you to develop skills in:

- Using assistive technologies
 - Strategies in effective learning
 - Time management
 - Exam technique & anxiety
 - Organisational skills
- Plus much more.

Our specialist tutors are also able to offer the following:

- One-to-one screening to develop your understanding of your own strengths and potential challenges
- Internal and external referrals to further support teams to support your needs, such as resilience coaching, wellbeing practitioners, or external medical professionals
- Exam Access Arrangements (EAA)
- Assistive technology including software and hardware
- Small group sessions.

learning.support@cambria.ac.uk





Learning Support

The Learning Support Team is here to ensure that you have the support you need to succeed on your course. We can adapt this to meet your individual needs and requirements. We can provide assistance from application and then throughout your journey.

We provide:

- Class-based Learning Support at Entry 3 and Level 1
- Transition support
- Parent professional drop-in sessions (monthly drop-in sessions)
- Application support sessions (monthly drop-in sessions)
- Access to quiet and inclusive spaces, including Additional Learning Needs (ALN) Inclusion Area.
- Autism Support Adaptations and resources.
- Bespoke and targeted support
- Lunch and break supervision (dependent on individual person-centred needs)
- Communication Support (dependent on individual person-centred needs)
- Support to and from transport
- Bespoke transition
- Bespoke, personal care/mobility support (dependent on individual person centred needs)
- British Sign Language (BSL) Signer/Communication Support Worker
- Interpreter (BSL)
- Orientation training
- Sighted guide (for a blind student).

We have learning support available across all sites to make sure you have all the above plus:

- Autism Spectrum Disorder (ASD) Specialist Support Workers

Please let us know if you have an Individual Development Plan, Education Health and Care Plan or NHS Health Care Plan. You can let us know on application or through

learning.support@cambria.ac.uk

Inclusion and Learning Support



Cambria is committed to inclusion for all learners.

Equality and Diversity

At Cambria we are committed to promoting equality, celebrating diversity and creating a fully inclusive learning experience. We are here to support you with any issues related to you and your identity. Cambria is an inclusive place for everyone regardless of your gender, sexuality, race, religion, disability, social class or anything else that makes you, you.

Cambria has a dedicated Equality and Diversity Coordinator who is there to support you in all issues related to equality including:

- Advice, guidance and support
- Supporting your transition into college
- One-to-one ongoing support
- Student engagement on equality issues
- Equality focused clubs and societies e.g. LGBTQ+ Club
- Equality in your education.

All members of the College will:

- Respect and celebrate the different backgrounds and cultures of all learners, staff and visitors
- Reflect the diverse communities we serve
- Have zero tolerance of bullying and harassment
- Treat all learners and staff equally and fairly
- Ensure learning and college services are accessible to all
- Challenge prejudice.

equalityanddiversity@cambria.ac.uk

Accessibility

We will work with you to ensure that you have full access on site whilst on your course. This may include us providing additional equipment, personal care plans or fire evacuation plans. To ensure that you have the best transition and planning, please contact our support coordinators to discuss your requirements.

learning.support@cambria.ac.uk

Library Information

The Library is a great place to come and be part of student life at Cambria, lots of college activities take place in the libraries and we can't wait to meet you. We are here to support you and help make the best of your time in college - have a chat with the team about what you need.



We provide a fantastic range of print and digital resources to help you with your coursework and take into account your individual preferences and learning styles.

TAP OR CLICK HERE



to find out more

We have one of the largest and most well used ebook collections in Wales, these are easy to access in college and at home but if you need some help to find the right ones for you, our team can support you. If you prefer printed books we have a wide range of titles for all subject areas. Our digital collection offers excellent online platforms to help with research and assignment planning.

These platforms include access to video content and subject specific, industry ready information.

Your Library is also a great place to come and study as we provide inclusive and accessible areas for group work or independent study.

We can offer:

- A friendly team who are ready to support, help and guide you
- Support with research and information skills
- Excellent IT resources - PCs, laptops (Chromebooks), copiers, wifi access for your own devices and places to recharge them
- A relaxed and safe environment for you to take time out

- An excellent range of books and ebooks to support with course work
- Fantastic online content - discover our digital collection on the Student Hub
- Chromebooks to loan so you can complete work out of college
- Course books and stationery for sale, if you forget to bring yours
- One-to-one support with our Academic Skills Facilitators, who can offer helpful hints and tips on how to plan your studies and stay in control.

Here are just some of the topics we can help you with:

- Planning and organising your time
- Exam and revision techniques
- Creating a good assignment
- Research and finding information sources
- Presentation skills
- Digital skills
- Critical thinking.

If you have any questions about using our resources or getting academic skills support email:

library@cambria.ac.uk



Learner Experience

There are so many ways to embrace student life and maximise your time at Cambria. You will be offered opportunities to make new friends, try new activities, develop your skills and add value to your course. Not only will they help you with your health, wellbeing and CV, but will boost your self-confidence and your employability skills.

Enrichment Experiences

Enrichment activities offer the perfect opportunity to discover, understand and develop your potential, increase your skills and interests, build your confidence and make friends! Moreover they will allow you to apply and accelerate your learning which will enhance your chosen course.

You can get involved in cross-college clubs and societies, take part in community activities and volunteering, develop leadership, problem-solving, teamwork and communication skills.

Student Voice

Get involved with Student Voice and truly make a difference to your college! Student Voice is how you get to have your say and change what happens at the College. Become a Class Rep and attend Student Voice meetings or lead/join one of our student clubs and societies to gain valuable skills that could potentially enhance your future career opportunities.

Skills Competitions

Cambria is a WorldSkills Centre of Excellence and leads in competitions in Wales and the UK. You are encouraged to take part in skills competitions, allowing you to compete against others and to demonstrate your talent in your chosen skill. This is a proven way to enhance your learning, development of employability, technical skills and your self-confidence.



Active Cambria

The Active Cambria team provide an extensive, inclusive wellbeing programme to students and staff. Consisting of action packed fun multi sport and fitness activities such as yoga, spin, football, dodgeball, badminton and fun team games. We offer a Young Ambassador programme called the Trusted Leader programme, which offers coaching experience, qualifications, trips away and mentoring. The team can also offer sleep, nutrition, strength, fitness and lifestyle advice to students. Active Cambria gives all students an holistic care package to support their academic and employment skills.

activecambria@cambria.ac.uk

Enterprise and Starting Your Own Business

Whether you want to be your own boss in the future, explore a business idea or want to test trade right now, Cambria and Big Ideas Wales are here to support you! There are enterprise clubs and activities driven by a student-led Enterprise Committee and a range of challenges to develop your entrepreneurial skills to take part in.



Duke Of Edinburgh (DofE)

Cambria is proud to be one of the largest providers of DofE in the Further Education sector in Wales. We offer gold, silver and bronze awards to all students aged 14-24, offering the chance to develop invaluable skills for life and work to fulfil your potential.

Higher Potential Programme (HPP)

At Cambria we believe in you and in your brilliant potential. We're here to inspire you and to help you identify, explore and develop further. So whether your talents, interests and skills lie in the arts, IT, languages, sports, leadership, SEREN or vocational skills, we're on hand to help you recognise your higher potential and achieve excellence and success. Our Higher Potential Coordinator works with staff and students to support and stretch your talents and abilities during your time at Cambria.

Job Shop

Cambria Job Shop supports the employability skills of all Cambria students and is available across all sites. The employability service is vital in our students progressing into careers after studying.

Through drop-in sessions the Job Shop supports students by offering advice on CVs/cover letters, job search, apprenticeships, application forms, and interview tips. There are also workshops available for those who prefer to work in group settings.

For more details please email:
jobshop@cambria.ac.uk

Elite Sport

At Cambria, we are passionate about providing opportunities for elite athletes to represent the College at local, regional and national level. Our elite sport teams are made up of athletes studying across Cambria. Teams compete in Association of Colleges (AoC) Leagues and annual Welsh Colleges tournaments. There is also the opportunity for our individual athletes to compete in national college events.

Cambria Football

Cambria Women's Football

The women's football team is based out of the Yale site, but we encourage any current players who attend any Cambria site to trial and join. The Team plays in the AoC North West (South) Women's league, with a cup competition every year. There are opportunities to represent the College at the Welsh Colleges competition in Cardiff. Also there are opportunities to attend the Welsh Colleges trials to represent the Welsh Colleges team, who travel to Rome each year for fixtures.

Cambria Men's Football

The men's football team is based at the Yale site. We compete in the AoC North West league and play on a Wednesday afternoon, to accommodate your studies. There is also an opportunity to represent the College in the Welsh Colleges sport competition, giving learners the opportunity to experience playing other colleges across the country.

Cambria Netball

Our team is based at the Yale site, and is made up of learners from both Deeside and Yale. Each year sees teams from different clubs in North East Wales coming together to compete for Cambria, and that could be you! We've had successes in the Association of Colleges (AoC) league and we were the Welsh College Champions in 2021 and 2022 and are the current Wales President Cup Champions in 2023.



Football Scholarships

Wrexham AFC Football & Education

The Wrexham AFC Community Trust Football & Education is a new programme recruiting both men and women between the ages 16-18 to become part of the Football & Education Scholarship Programme. Sports students will train weekly with Wrexham AFC Community Trust staff, competing in the Community Football & Education Alliance representing Wrexham AFC. Students will be expected to study with Cambria with the opportunity to complete a Level 2 or Level 3 sport qualification, there will also be opportunities to complete additional qualifications to further enhance your career.

Connah's Quay Nomads Partnership

We are entering our ninth year in partnership with Connah's Quay Nomads FC, who are one of the top teams in Welsh domestic football. Cambria Deeside students are eligible for the Connah's Quay Nomads Football Scholarship.

English & Maths



All learners who have not yet achieved a grade C / 4 or above in English or Maths are required to continue to study these subjects.

This can either be done as a GCSE or an Essential Skills Wales (ESW) qualification.

We can help by offering you lessons and support sessions to make sure you have the support from tutors to improve your English and Maths skills.

If you do not have a GCSE grade C / 4 or above in English or Maths, you'll be contacted by your tutor after enrolment to discuss your next steps.

Why improve your English and Maths?

- Your chances of finding employment are increased
- You're likely to earn more
- You'll have more opportunities when it comes to further learning or university
- You'll be more prepared to progress to an apprenticeship.

English and Maths Skills are key to all aspects of your life as well as ensuring you can progress in your chosen career.

Advanced Skills Baccalaureate Wales

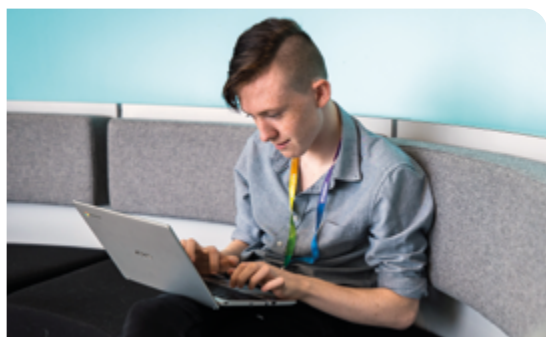


The Advanced Skills Baccalaureate Wales is an exciting new qualification that started in September 2023 and replaced the Advanced Skills Challenge Certificate that the College delivered successfully for many years.



**Bagloriaeth Sgiliau
Cymru Uwch
Advanced Skills
Baccalaureate Wales**

It encourages independence, adds real-life experience to the curriculum, develops additional personal interests and promotes skills highly regarded by universities and employers across the UK, such as critical thinking, problem solving, creativity and innovation.



Who will study the Advanced Skills Baccalaureate Wales?

All A Level students will study the subject in addition to their other A Level subjects. Most students taking a 2 year Level 3 vocational qualification will study the subject, although staff will clarify whether this applies to you during the application process.

**For further information please contact
asbwales@cambria.ac.uk**

What projects will I undertake?

The Advanced Skills Baccalaureate Wales is a 2 year programme that has the same UCAS points and grading structure as an A Level and can be combined with both A Level and Level 3 vocational programmes. You will undertake 3 projects during the 2 years, one based on sustainability, one focusing on your future plans and one completed individually on a subject of your choice.

LEARN IN WELSH

Available in this subject - see page 07

TAP OR CLICK HERE




for case studies,
videos and more

If you did not get any qualifications or your grades were lower than you had hoped for, it's not the end of the world.

Our Entry and Level 1 programmes are here for exactly that reason - to help you get a real idea about what you want to do next. These courses can be undertaken in the following subject areas:

FOUNDATION LEARNING COURSES						
SUBJECT	LEVEL		DEESIDE	YALE	BERSHAM	NORTHOP
Animal Care	Entry	1				✓
Art	Entry	1		✓		
Business, Travel & Events		1		✓		
Construction Trades	Entry	1	✓		✓	
Digital Technologies	Entry	1		✓		
Engineering	Entry	1	✓		✓	
Floristry		1		✓		
Hair and Beauty	Entry	1	✓	✓		
Health, Social Care & Childcare	Entry	1	✓	✓		
Hospitality & Catering		1		✓		
Motor Vehicle	Entry	1		✓	✓	
Music, Performing & Production Arts		1		✓		
Sport & Fitness		1	✓	✓		
Uniformed Public Services		1	✓	✓		

Your Level 1 Programme of Study



1

Main Qualification

- Subject specific vocational qualification
- Theory units to help you develop knowledge
- Practical workshops to develop your skills

2

Maths & English

- Essential Skills Wales or GCSE resits for every learner
- Essential for apprenticeships, employment or progression to higher level learning

3

MADE Programme

- Life & Employability Skills
- Wellbeing & health
- Awareness of current affairs and the world around you

What is an Apprenticeship?



Apprenticeships give you the opportunity to work for an employer, earn a salary, get paid holidays and achieve nationally recognised qualifications. You will also gain valuable workplace skills and experience.

Apprenticeships are for all ages and for people already employed, subject to eligibility criteria. They develop your knowledge and practical ability to do your job effectively and by being employed you are developing employability skills and personal confidence. Apprenticeships are a great way to start and develop your career and open the door to exciting employment prospects.

Key Benefits:

- **Earn a wage**
- **Gain recognised qualifications**
- **Get on-the-job training and skills**
- **Get paid holidays**
- **Start your career journey**
- **Develop employability skills and confidence**
- **Opportunity to progress to degree level apprenticeships**
- **College benefits including student card and discounts.**

The Welsh Government supports an all-age Apprenticeship programme, therefore you could be eligible for an Apprenticeship opportunity to train, regardless of age or job title.

Cambria works with a wide range of employers to support Apprenticeships from Level 2 - Level 6 in over 400 different pathways, for a wide variety of sectors. We can also support Apprenticeship training in England for a selection of Apprenticeship standards.

There are four levels of Apprenticeships which take between 1-4 years to complete individually (more if progressing through the levels). You will gain industry approved qualifications, extensive work experience and qualifications within literacy, numeracy and digital literacy (for specific courses).

How do I Apply?

If you find a job, you can simply speak to your employer about becoming an Apprentice. If your employer agrees, please contact the Employer Engagement team at Cambria for Business to discuss the process and find out about the most fitting Apprenticeship and level.

If you don't already have a job visit our Apprenticeship vacancies page to see which employers are currently taking on Apprentices:

www.cambria.ac.uk/jobs

Email **employers@cambria.ac.uk**
or call **0300 30 30 006**
to speak to one of the team.

We support full time learners to apply for Apprenticeships - for more information visit:

**[www.cambria.ac.uk/
apprentice-need-to-know](http://www.cambria.ac.uk/apprentice-need-to-know)**

Cambria delivers Apprenticeships in most occupational areas including:

TAP OR CLICK HERE



for case studies,
videos and more

Accounting

**Agriculture &
Precision Agriculture**

**Animal Care
& Management**

**Beauty, Spa &
Complimentary Therapies**

**Business
Administration**

**Business, Management
& Leadership**

**Childcare, Childhood
Studies & Playwork**

**Construction &
Building Services**

**Customer Service,
Advice & Guidance**

**Digital Technologies,
Computing & IT**

**Engineering, Manufacturing
& Maintenance**

Equine

Fabrication & Welding

Floristry

Food Manufacturing

**Forestry &
The Countryside**

Hairdressing & Barbering

Health & Social Care

**Horticulture
& Landscaping**

Hospitality & Catering

Motor Vehicle

Science

**Social Media &
Digital Marketing**

**Teaching, Assessing
& Education**

**Warehousing
& Logistics**

Jobs Growth Wales+

Are you aged 16-19, living in Wales and want to secure an apprenticeship, a job or help to get on to a full time college course?

Our Jobs Growth Wales+ programme will help you to develop your personal skills and overcome barriers that are preventing you from entering the world of work or securing employment. We will help you to improve your confidence, gain qualifications, focus on finding a career that's right for you and improve your literacy and numeracy skills.



You will attend a work placement in an area you are interested in, which will help you identify your career pathway.

You will be supported throughout your time on the programme by a dedicated and supportive team to help you secure further learning, employment or an apprenticeship.



The programme will include various workshops that will cover:

Personal & Social Skills

- **Confidence and communication skills**
- **Attitudes and behaviours**
- **Wellbeing**
- **Personal resilience**
- **Transferable skills eg. teamwork, listening**
- **Problem-solving**
- **British Citizenship**
- **Volunteering and community engagement.**

Employability Skills

- **Focus on next steps**
- **Career research**
- **Industry tours**
- **CV preparation**
- **Interview skills**
- **Money management**
- **Entrepreneurship**
- **Work tasters.**

Skills Development

- **Development of literacy and numeracy skills**
- **Welsh language and culture**
- **Health and Safety**
- **Manual handling**
- **Digital skills.**

Advancement

Once you have successfully completed the Engagement Level and you have identified the career pathway you would like to follow through work tasters, you can progress to Advancement. Advancement allows you to spend more time in the workplace, gaining experience and developing skills within the working environment.

If you do not have a GCSE in Maths or English at grade C / 4 or above, the Advancement strand provides an opportunity for you to complete an Essential Skills Wales (ESW) qualification in these subject areas. There is also the opportunity to gain a vocational qualification at Level 1 whilst you are in the workplace. In addition you will receive a non-means tested training allowance, help towards travel costs and PPE needed for the workplace.

**TAP
OR
CLICK
HERE**



**Visit the link for more
information including
companies we work with**

**JGWPlus@cambria.ac.uk
01978 267472**



What Can I Study?

A LEVELS		Pages 30 - 52	
COURSE	DEESIDE SIXTH	YALE SIXTH	
Art & Design (Art, Craft and Design)	✓		
Art, Craft & Design (Art, Craft and Design, Fine Art, Textile Design, 3D Design and Graphic Design)		✓	
Art & Design (Photography: Interactive Media and Digital Communication)		✓	
Biology	✓	✓	
Business Studies	✓	✓	
Chemistry	✓	✓	
Classical Civilisation		✓	
Computer Science	✓	✓	
Criminology (Level 3 Applied Diploma)	✓		
Digital Technologies	✓	✓	
Drama & Theatre Studies	✓	✓	
Economics	✓	✓	
English Combined Language & Literature		✓	
English Language	✓	✓	
English Literature	✓	✓	
Environmental Science		✓	
Film Studies	✓	✓	
French	✓	✓	
Further Maths	✓	✓	
Geography	✓	✓	
Government & Politics	✓	✓	
History	✓	✓	
Law	✓	✓	
Mathematics	✓	✓	
Media Studies	✓	✓	
Music	✓	✓	
Physical Education	✓	✓	
Physics	✓	✓	
Product Design	✓		
Psychology	✓	✓	
Religious Studies (Philosophy, Ethics and Religion)	✓	✓	
Sociology	✓	✓	
Spanish		✓	
Welsh (First Language)	✓	✓	
Welsh (Second Language)	✓	✓	

Please see course pages for further details

PRACTICAL COURSES

Pages 54 - 87

SUBJECT	DEESIDE	YALE	BERSHAM	LLYSFASI	NORTHOP
Access to Higher Education	✓	✓			
Beauty, Spa & Complementary Therapies	✓	✓			
Business, Management & Leadership		✓			
Childcare, Childhood Studies & Playwork	✓	✓			
Construction & Building Services	✓		✓		
Construction - Technical			✓		
Construction - Trades	✓		✓		
Creative Industries - Art & Design		✓			
Creative Industries - Creative Media Production	✓	✓			
Creative Industries - Music Performance & Production	✓	✓			
Creative Industries - Performing Arts & Backstage Theatre Production		✓			
Digital Technologies, Computing & IT	✓	✓			
Engineering - Fabrication & Welding	✓		✓		
Engineering - Manufacturing & Maintenance	✓		✓		
Engineering - Motor Vehicle	✓		✓		
Esports	✓				
Fashion Business & Retail	✓				
Floristry		✓			
Hairdressing & Barbering	✓	✓			
Health & Social Care	✓	✓			
Hospitality & Catering		✓			
Independent Living Skills		✓			✓
Neurodiverse-centred Courses	✓	✓			✓
Science - Forensic & Criminal Investigation		✓			
Sport & Fitness	✓	✓			
Step into Cambria		✓			✓
Travel & The Visitor Economy		✓			
Uniformed Public Services	✓	✓			

Please see course pages for further details

What Can I Study?

LAND-BASED COURSES		Pages 88 - 98
SUBJECT	LLYSFASI	NORTHOP
Agricultural Engineering	✓	
AGCO Diploma Training Scheme	✓	
Kubota Diploma Training Scheme	✓	
Agriculture & Precision Agriculture	✓	
Animal Care & Management		✓
Forestry & The Countryside	✓	

Please see course pages for further details



TAP OR CLICK HERE



to visit the
website



Our nursery provides full and part time places for both staff/ students and members of the local community.

At Toybox Nursery we offer exceptional quality childcare, ensuring that both parents and children enter an environment that is warm and friendly, with care and education of the highest standard. We have the provision to cater for children with additional needs.

With a setting that provides educare for children aged 3 months to five years, it is important to understand that we view all age groups as a stepping-stone towards preparing them for their future.

**To find out more visit toybox-nursery.cambria.ac.uk
toybox@cambria.ac.uk | 01978 267159**



A Levels

TAP OR CLICK HERE



to find out more
about A Levels

Welcome to A Levels

Welcome to our two exciting, high performing sixth forms; Deeside Sixth and Yale Sixth. We are proud of our sector leading success, outstanding reputation for inspiring students to succeed, high quality of teaching and learning, and excellent guidance and support.

Our students are at the centre of everything we do and we are confident that you will receive individual care, support and encouragement to flourish and achieve your goals. Visitors to the College regularly comment on the special, happy and purposeful environment. The friendly, respectful teamwork between staff and students makes this happen and all of our sixth form students are valued as individuals and encouraged to exceed their potential.



Our sixth forms are vibrant, friendly places which offer excellent libraries and cutting edge IT facilities to support study and independent research. We help you to develop your skills beyond the curriculum to prepare you for life after college, whether you go on to study at university level, take an apprenticeship or start a great career.

On our two-year programme, A Level students usually choose to study three subjects, although some learners who achieve five or more GCSEs at grades A*/A or 7-9 may consider choosing four subjects. Your final choice of subjects is always confirmed with staff prior to starting to ensure that these represent the most appropriate choice for you. At the end of your first year, you'll be able to achieve the AS qualification (with UCAS points attached) and continue on to the A2 qualification in your second year.

In addition to the A Level subjects you choose yourself, we will further support you to achieve your potential by enrolling you on the Advanced Skills Baccalaureate Wales qualification which you will study as an additional A Level and which will assist you to develop additional academic and employability skills. Further information about this qualification can be found on page 20 in this guide.

To study A Levels you must have at least 5 GCSEs at C / 4 or above including GCSE English Language / Welsh 1st Language and Maths (not Numeracy). Please also check our individual subject entry requirements as they may have more specific requirements in addition to these.

LEARN IN WELSH

All of our A Level courses can be assessed through the medium of Welsh.

Our Sites & Facilities

We have two exciting, high performing local sixth forms for you to choose from. Each boasting world-class facilities and the latest technology for learners to utilise.

Deeside Sixth



Deeside Sixth is in Connah's Quay, situated in a ground-breaking £14 million complex for the last 8 years.

At Deeside Sixth all students are able to utilise the latest technology in our ICT, Computing suites, as well as Chromebooks in all teaching rooms.

There is an Art Studio with open air terrace, Product Design suite with 3D printer and laser cutter, Drama Studio, Music Centre and large Science laboratories. Students benefit from the excellent library facilities where learners can access course texts, online or in print, purchase resources and textbooks, receive support in using the Google Suite and for academic study skills such as assignment writing, referencing etc.

TAP OR CLICK HERE



to take a tour of this site



Yale Sixth

IÂL 6 YALE
CAMBRIA

Yale Sixth is based in Wrexham where a £20 million redevelopment has been recently completed. Providing new facilities including a three-storey complex equipped with the latest digital technology, a 200-seat conference hall, a cutting-edge study space, a revolutionary sports space and IT suites.

TAP OR CLICK HERE



to take a tour of this site

At Yale Sixth there are well-equipped Science laboratories, Performing Arts studios, computer suites and art studios. All students have access to IT facilities and equipment in teaching rooms to support learning, such as Chromebooks and up-to-date apps.

Students have access to the university style library which has space over three floors to undertake private study, group tutorials and to access support for their academic skills development.



James Steven

Studied Media Studies, English Language, and History

"I have found my studies challenging at times but my subjects have given me a sense of purpose and commitment that has motivated and matured me over the past two years.

"The immense support of staff encouraged me to pursue ambition, and gave me the enthusiasm to take up roles within the College such as Student President. From September, I'll begin studying Politics and Modern History at the University of Manchester, where one day I'll pursue a career in journalism."



IÂL 6 YALE
CAMBRIA

Hear from our students



Becky Jones

Studied Biology, Chemistry and Maths

"I chose to study these subjects because ever since high school I have always been interested in Sciences. I like figuring out how and why certain things react the way they do and how we have been able to use these reactions and these chemicals to be sustainable and live in the world we do today.

"I am hoping to hear back from my Chemical Engineering degree apprenticeship at Unilever however my back up plan is to complete my Chemical Engineering Masters course at Manchester University."

Glannau Dyfrdwy
Deeside
CAMBRIA



A Level Art and Design (Art, Craft and Design)

The course enables you to develop skills through a variety of activities and/or specialisms which could include textiles, drawing, painting, 3D and/or print making.

You will use a wide range of media, techniques and approaches to produce a portfolio of art, craft and design work. There will be opportunities to work with practising artists, designers and craftspeople. You will participate in cultural and contextual activities and educational visits to support your studies.

CAN BE STUDIED AT:

DEESIDE SIXTH

ENTRY REQUIREMENTS

5 GCSEs grade A*-C / 9-5 including English Language / Welsh 1st Language and Maths (not Numeracy) and a grade A*-B / 9-6 in an Art & Design related subject.

A Level Art and Design (Art, Craft and Design, Fine Art, Textile Design, 3D Design and Graphic Design)

The course enables you to develop knowledge and practical skills to help you develop as a creative practitioner.

You will explore a range of specialisms from textiles, drawing, painting, 3D, to print making. You will work with traditional art materials and also have the opportunity to use the latest digital media, using industry standard iMac computers, Adobe software and Computer Aided Design (CAD). There will be opportunities to work with practising artists, designers and craftspeople.

Students cannot take more than one Art and Design endorsement.

CAN BE STUDIED AT:

YALE SIXTH

ENTRY REQUIREMENTS

5 GCSEs grade A*-C / 9-5 including English Language / Welsh 1st Language and Maths (not Numeracy) and a grade A*- B / 9 - 6 in any Art & Design endorsement (such as Fine Art, Graphic Communication, Textile Design, Three Dimensional Design or Photography).



A Level Art and Design (Photography: Interactive Media and Digital Communication)

The course enables you to develop knowledge and practical skills to help you develop as a creative practitioner.

You will use a wide range of media, techniques and approaches such as illustration, advertising, packaging design and communication and computer graphics to produce a portfolio of work. You can expect to work with traditional art materials and also the latest digital media using industry standard iMac computers, Adobe software and CAD.

Students cannot take more than one Art and Design endorsement.

CAN BE STUDIED AT:

YALE SIXTH

ENTRY REQUIREMENTS

5 GCSEs grade A*-C / 9-5 including English Language / Welsh 1st Language and Maths (not Numeracy) and an Art & Design endorsement (such as Fine Art, Graphic Communication, Textile Design, Three Dimensional Design or Photography).

A Level Biology

In AS/A Level Biology you will cover a wide range of topics including human body systems, evolution and biodiversity.

You will also look at population growth, photosynthesis, respiration, food production and genetic inheritance. You will gain good laboratory experience through which you will develop your practical and writing skills. The AS Level areas of study include cell structure, cell division, adaptation for nutrition, transport in plants and animals. At A2, study extends to consider wider applications of Biology such as microbiology, homeostasis, inheritance and applications of genetics.

CAN BE STUDIED AT:

DEESIDE SIXTH

YALE SIXTH

ENTRY REQUIREMENTS

5 GCSEs grade A*-C / 9-5 including English Language / Welsh 1st Language and Maths (not Numeracy). Applicants will also need at least a grade B in the GCSE science subject you wish to study, plus GCSE Maths. All grades must be achieved on higher tier papers. Note: GCSE Numeracy is not accepted in place of GCSE Maths.

A Level Business Studies

The course will focus on the ever changing nature of business and how it is affected by national and international issues.

At AS Level, students will study two modules. The first provides an introduction to the scope of Business Studies within the context of starting a new business. In the second module students examine how to measure the effectiveness of larger businesses, including marketing, finance, operations management and human resources. At A2 Level, students build on the theory introduced during the AS Level.

A Level Chemistry

Chemistry is concerned with the study of materials, their properties, reactions and uses.

Students enjoy learning through combined practical and theory work in which they experience working independently and as part of a group. Students gain important team and communication skills and the ability to reason logically on this course. They also develop planning, investigative, research and practical skills in the laboratory. These skill sets are highly valued by employers.

CAN BE STUDIED AT:

DEESIDE SIXTH

YALE SIXTH

ENTRY REQUIREMENTS

5 GCSEs grade A*-C / 9-5 including English Language / Welsh 1st Language and Maths (not Numeracy). Students will also require a C / 4/5 grade in GCSE Maths at intermediate or higher tier (GCSE numeracy not included).

CAN BE STUDIED AT:

DEESIDE SIXTH

YALE SIXTH

ENTRY REQUIREMENTS

5 GCSEs at grade C/ 4/5 or above including GCSE English Language / Welsh 1st Language. Applicants will also need at least a grade B in the GCSE science subject you wish to study, plus GCSE Maths. All grades must be achieved on higher tier papers. Note: GCSE Numeracy is not accepted in place of GCSE Maths.



A Level Classical Civilisation

Classical Civilisation is the study of ancient Greece and Rome through the history, literature and myth of these two civilisations.

All students will study material from both Greece (year 1) and Rome (year 2) and their surrounding worlds, drawn from diverse time periods ranging from Archaic Greece to Imperial Rome. This study aims to give students a detailed understanding of this fascinating period in world history and an appreciation of its massive influence. During their study, students are encouraged to sharpen critical thinking and analytical skills in making sense of these events and personalities.

CAN BE STUDIED AT:

YALE SIXTH

ENTRY REQUIREMENTS

5 GCSEs grade A*-C / 9-5 including English Language / Welsh 1st Language and Maths (not Numeracy). No prior knowledge is necessary when choosing the subject at A Level.

A Level Computer Science

This course, with its emphasis on data abstraction, general problem solving, algorithmic and mathematical reasoning, scientific and engineering based thinking, is a good foundation for understanding the future challenges in this increasingly technological age.

You will develop an understanding of, and the ability to apply, the fundamental principles and concepts of Computer Science. You will gain the ability to analyse problems in computational terms through practical experience of solving such problems and develop the ability to articulate the individual (moral), social (ethical), legal and cultural opportunities and risks of digital technology.

CAN BE STUDIED AT:

DEESIDE SIXTH

YALE SIXTH

ENTRY REQUIREMENTS

5 GCSEs at grade C / 4/5 or above including English Language / Welsh (1st Language) and Mathematics grade B / 6 or above (GCSE Numeracy not included). Some experience of programming would be advantageous, but this is not essential. However, if Computer Science was taken at GCSE, a C / 4/5 or above is required.

Criminology - Level 3 Applied Diploma

This course is aimed at A Level students who are interested in a career in the police, law enforcement, youth justice, probation, prison and social care sectors. The course is taught over two years and is taken as part of an A Level package.

As a student on this course you will explore the theories surrounding criminology as well as how to effectively analyse and evaluate situations where crimes are committed. The legal and policing sectors are vast and there are lots of rewarding career opportunities available. The main purpose of this course is to use the qualification to support access to Higher Education.

CAN BE STUDIED AT:

DEESIDE SIXTH

ENTRY REQUIREMENTS

5 GCSEs grade A*-C / 9-5 including English Language / Welsh 1st Language and Maths (not Numeracy). This qualification supports learners' progression from any study at Level 2, particularly GCSEs in Sociology, Law, Psychology, Citizenship, and Humanities.

A Level Digital Technologies

The course develops the capacity for thinking creatively, analytically, logically and critically.

You will learn to apply skills, knowledge and understanding of Digital Technologies in a range of contexts to solve problems and gain an understanding of emerging technologies and the consequences of using Digital Technologies on individuals, organisations and society as well as social, legal, ethical and other considerations on the use of Digital Technologies.

You will learn transferrable skills needed such as co-operative working and project management.

CAN BE STUDIED AT:

DEESIDE SIXTH YALE SIXTH

ENTRY REQUIREMENTS

5 GCSEs grade A*-C / 9-5 including English Language / Welsh 1st Language and Maths (not Numeracy).

A Level Drama and Theatre Studies

AS and A2 Drama and Theatre Studies offers the opportunity to deepen and broaden an intellectual and practical understanding of the subject area and also develop confidence, communication and presentation skills.

At AS you will understand and analyse live performances, study a set text and perform a scripted piece. At A2 you will study two texts, devise an original piece of drama and perform a scripted piece of theatre to a live audience. You will be required to attend professional theatre performances regularly.

CAN BE STUDIED AT:

DEESIDE SIXTH

YALE SIXTH

ENTRY REQUIREMENTS

5 GCSEs grade A*-C / 9-5 including English Language / Welsh 1st Language and Maths (not Numeracy). English Literature at Grade B / 6 is essential. Previous experience in performing is recommended although not mandatory. However, if Drama/Expressive Arts was taken at GCSE a grade C / 4/5 or above is required.

A Level Economics

During the two years of the programme students will cover topics including an introduction to economic principles, economics in action, exploring economic behaviour, and evaluating economic models.

Delivery of the programme is varied and interesting, consisting of lectures, workshops, guest speakers, tutorials, trips and conferences.

CAN BE STUDIED AT:

DEESIDE SIXTH

YALE SIXTH

ENTRY REQUIREMENTS

5 GCSEs at grade C / 4/5 or above, including English Language / Welsh (1st Language). If Economics was taken at GCSE then a C / 4/5 or above is required. Students will also require a C / 4/5 grade in GCSE Maths at intermediate or higher tier (GCSE Numeracy not included).



A Level English Combined Language and Literature

English Combined Language and Literature is an enjoyable, challenging and highly successful course at the College.

As a student on this course you will learn to analyse and compare a wide variety of texts, from poetry, drama and novels to journalism and non-literary texts. You will acquire a detailed linguistic and literary vocabulary and knowledge of the contexts in which texts are written and received. The course also requires you to develop your writing skills: in fiction, in factual texts and in essays. Overall, the language skills developed at A Level are suitable for a huge variety of degree courses.

CAN BE STUDIED AT:

YALE SIXTH

ENTRY REQUIREMENTS

5 GCSEs grade A*-C / 9-5 including English Language / Welsh 1st Language and Maths (not Numeracy).

Note: Cannot be taken in combination with AS/A-level English Language or AS/A-level English Literature.

A Level English Language

Language is woven into every aspect of our lives and influences our thoughts, actions and what we believe to be real.

English Language is a fascinating and challenging course and includes the exploration of Language and Gender, Language and Power and Contemporary English. You will develop a knowledge of English grammar and style and study the theory behind spoken language. You will have the opportunity to analyse a wide range of texts, spoken and written, from the past and the present and produce your own creative writing. Studying this course will strengthen the communication skills necessary for success in your other A Levels and life.

CAN BE STUDIED AT:

DEESIDE SIXTH

YALE SIXTH

ENTRY REQUIREMENTS

5 GCSEs grade A*-C / 9-5 including English Language / Welsh 1st Language and Maths (not Numeracy).

Note: Cannot be taken in combination with AS/A level English Combined Language and Literature.

A Level English Literature

The study of A Level Literature increases understanding of how meaning is created in literary texts and develops the ability to respond to literary texts through discussion and written work.

Students will study poetry, prose and drama from various periods. There is an element of wider reading and students will acquire a sophisticated knowledge of the technical vocabulary of literature. Students will explore multiple interpretations of texts and gain an understanding of the contexts related.

CAN BE STUDIED AT:

DEESIDE SIXTH

YALE SIXTH

ENTRY REQUIREMENTS

5 GCSEs grade A*-C / 9-5 including English Language / Welsh 1st Language and Maths (not Numeracy).

Note: Cannot be taken in combination with AS/A level English Combined Language and Literature.

A Level Environmental Science

The environmental sector is a growth industry and on this course you will develop the key skills required to either enter the workplace or continue onto Higher Education.

If you have a keen interest in the sustainability of the planet then this course could be for you. You will develop skills through a variety of activities that focus on the physical environment, biological resources, energy resources, pollution and more.

CAN BE STUDIED AT:

YALE SIXTH

ENTRY REQUIREMENTS

5 GCSEs grade A*-C / 9-5 including English Language / Welsh 1st Language, Science and Maths at intermediate or higher tier (GCSE Numeracy not included). Geography GCSE at grade C / 4/5 or above is desirable.



A Level Film Studies

Film is one of the main cultural innovations of the 20th century and a major art form of the last hundred years.

Those who study it characteristically experience a high degree of enthusiasm and excitement for what is a powerful and culturally significant medium, inspiring a range of responses from the emotional to the reflective.

Film Studies consequently makes an important contribution to the curriculum, offering the opportunity to investigate how film works both as a medium of representation and as an aesthetic medium.

CAN BE STUDIED AT:	
DEESIDE SIXTH	YALE SIXTH

ENTRY REQUIREMENTS
5 GCSEs grade A*-C / 9-5 including English Language / Welsh 1st Language and Maths (not Numeracy).

A Level French

The AS/A Level course provides a natural progression route for students who have studied the language at GCSE level.

The four skills of listening, speaking, reading and writing are further developed and allow students to gain a deeper understanding of the French language.

We offer travel opportunities for our students and they are also advised on opportunities for independent travel to France, perhaps on work experience or similar activities.

CAN BE STUDIED AT:	
DEESIDE SIXTH	YALE SIXTH

ENTRY REQUIREMENTS
5 GCSEs grade A*-C / 9-5 including English Language / Welsh 1st Language and Maths (not Numeracy) and French.



A Level Further Maths

In this course you will build on the understanding gained in AS/A Level Maths, extend your range of skills and techniques and use them in more difficult, unstructured problems.

You will apply mathematical logic and techniques across Pure Mathematics, Statistics and Mechanics. Further Maths is recommended for able Mathematicians and is increasingly a preferred option at many universities for those intending to study Physics, Engineering or Chemistry.

CAN BE STUDIED AT:

DEESIDE SIXTH

YALE SIXTH

ENTRY REQUIREMENTS

5 GCSEs grade A*-C / 9-5 including English Language / Welsh 1st Language plus a grade A/A* / 7-9 in GCSE Maths and a grade A/A* / 7-9 in a related qualification eg. Physics or Science or Level 2 Certificate in Additional Maths.

A Level Geography

Topics you will study include coastal landscapes, tectonics and changing places making links from GCSE topics and developing the concepts further; the contemporary strand of sustainability links all units.

The introduction of the non-examined assessment (coursework) is an exciting opportunity for students to enquire and investigate an area of the specification which interests them. A number of guest speakers and lectures are arranged for students to develop wider knowledge.

CAN BE STUDIED AT:

DEESIDE SIXTH

YALE SIXTH

ENTRY REQUIREMENTS

5 GCSEs at grade A*-C / 9-4 including Geography (or Humanities), and English Language / Welsh (1st Language). Students will also require a C / 4/5 grade in GCSE Maths at intermediate or higher tier (GCSE numeracy not included).



A Level Government and Politics

Politics is a prestigious A Level, an exciting and dynamic new subject to study, giving you a range of skills welcomed by Higher Education and progression to a wide choice of future courses and careers.

During the AS year, the main areas of study will focus on the government in Wales and the United Kingdom and participating in a democracy.

Activities include mock elections, trips and opportunities to meet and question a range of guest speakers including MPs and MSs.

A Level History

Be a part of the thriving, lively and successful department and learn about events that have shaped the world you live in and the people and circumstances that shaped these events.

History is a challenging and stimulating A Level, and is therefore one of the A Level subjects that are preferred by top universities.

Gain an understanding of historical terms, concepts and skills. Learn about significant individuals, societies, events and issues, and analyse different historical perspectives.

CAN BE STUDIED AT:

DEESIDE SIXTH

YALE SIXTH

ENTRY REQUIREMENTS

5 GCSEs grade A*-C / 9-5 including English Language / Welsh 1st Language and Maths (not Numeracy).

CAN BE STUDIED AT:

DEESIDE SIXTH

YALE SIXTH

ENTRY REQUIREMENTS

5 GCSEs grade A*-C / 9-5 including Maths (not Numeracy) and History and a grade B / 6 in English Language / Welsh 1st Language.



A Level Law

The course looks at the workings of the legal system and considers its effectiveness.

Students will discover the various sources of law, and explore the relationship between law and morality. The course will increase your understanding of how law operates in practice, with a study of the civil and criminal court systems. You will also come across some interesting and surprising legal cases, and have the opportunity to take part in debates and mock trials. In the second year, A Level students will critically examine the role of law enforcement and the police. Students will also study criminal law, the criminal trial process, sentencing and youth justice.

A Level Mathematics

AS and A Level Maths develops knowledge and skills across questions requiring use of mathematical argument, knowledge and proof, problem solving, modelling and use of data in statistics.

You will learn to recognise how a situation may be represented mathematically and understand the relationship between 'real world' problems and standard mathematical models. Maths is recommended for able Mathematicians and is increasingly a preferred option at many universities for those intending to study subjects such as Physics, Engineering or Chemistry.

CAN BE STUDIED AT:

DEESIDE SIXTH

YALE SIXTH

ENTRY REQUIREMENTS

5 GCSEs grade A*-C / 9-5 including English Language / Welsh 1st Language and Maths (not Numeracy).

CAN BE STUDIED AT:

DEESIDE SIXTH

YALE SIXTH

ENTRY REQUIREMENTS

5 GCSEs grade A*-C / 9-5 including English Language / Welsh 1st Language plus a B / 6 grade in GCSE Mathematics Higher Tier paper.



A Level Media Studies

Media learners will be introduced to the knowledge, understanding and skills required to analyse media products including television, video games, magazines, advertising, blogs, newspapers and radio.

Students will create a cross-media production in two forms, applying their knowledge and understanding of media language, representation, industry and audiences. Students will have training in the use of cameras and editing software, and have opportunities to work in the TV studio.

CAN BE STUDIED AT:

DEESIDE SIXTH

YALE SIXTH

ENTRY REQUIREMENTS

5 GCSEs grade A*-C / 9-5 including English Language / Welsh 1st Language and Maths (not Numeracy).

A Level Music

The course enables you to develop skills through a variety of activities. Your coursework will consist of studies such as composition, appraisal, ensemble and/or solo performance.

You will participate in cultural and contextual activities and educational visits to support your studies.

LEARN IN WELSH

available in this subject - see page 07

CAN BE STUDIED AT:

DEESIDE SIXTH

YALE SIXTH

ENTRY REQUIREMENTS

5 GCSEs grade A*-C / 9-5 including English Language / Welsh 1st Language, Maths (not Numeracy) and Music, or Grade 5 Theory and that you are able to read music notation and have a pass at Grade 4 practical in at least one instrument.



A Level Physical Education

During this course you will study applied anatomy and physiology, exercise physiology, biomechanical movement, skill acquisition, sport psychology, sport and society and the role of technology in physical activity and sport.

Both the AS and A Level specifications will require students to demonstrate their ability to apply knowledge and understanding from the different areas outlined above to physical activity and sport and to use theories, concepts, principles and models to analyse and evaluate physical activity and performance.

CAN BE STUDIED AT:

DEESIDE SIXTH

YALE SIXTH

ENTRY REQUIREMENTS

5 GCSEs grade A*-C / 9-5 including English Language / Welsh 1st Language and Maths (not Numeracy). Study of PE at GCSE is not essential, but if taken at least a grade B / 6 is required. Owing to the emphasis on assessing performance and coaching in a particular sport, participation in at least one sporting activity at club level is essential.

A Level Physics

You will study motion, energy and matter, this covers the topics of kinematics, dynamics, energy concepts, solids under stress, using radiation to investigate stars, particles and nuclear structure.

You will also study electricity and light, and oscillations and nuclei, including circular motion, vibrations, kinetic theory, thermal physics, nuclear decay and nuclear energy.



CAN BE STUDIED AT:

DEESIDE SIXTH

YALE SIXTH

ENTRY REQUIREMENTS

5 GCSEs at grade C/ 4/5 or above including GCSE English Language / Welsh 1st language. Applicants will also need at least a grade B in the GCSE science subject you wish to study, plus GCSE Maths. All grades must be achieved on higher tier papers. Note: GCSE Numeracy is not accepted in place of GCSE Maths.

A Level Product Design

Product Design offers a unique opportunity for you to identify and solve real problems by designing and making products in a wide range of contexts.

Product Design develops your interdisciplinary skills and your capacity for imaginative, innovative thinking, creativity and independence. You will design and make products using a variety of skills and materials. You will develop and model your ideas then manufacture a prototype which can be tested and evaluated on completion. The design and manufacture of your products will entail using both hand and machine tools.

A Level Psychology

Psychology is an exciting subject which attempts to understand how the mind works and to explain why individuals behave in certain ways.

During AS Level you will study the following units; Psychology: Past to Present and Exploring and Investigating Behaviour. At A2 Level you will look at the following units; Implications in the Real World which includes, The Study of Behaviours, such as autistic spectrum behaviours, addictive behaviours, bullying behaviours, criminal behaviours, schizophrenia and stress, as well as Controversies. You will also study Applied Research Methods.

CAN BE STUDIED AT:

DEESIDE SIXTH

ENTRY REQUIREMENTS

5 GCSEs grade A*-C / 9-5 including English Language / Welsh 1st Language, Maths (not Numeracy) and Design & Technology at grade B / 6.

CAN BE STUDIED AT:

DEESIDE SIXTH

YALE SIXTH

ENTRY REQUIREMENTS

5 GCSEs at grade C / 4/5 or above including English Language / Welsh (1st Language) and Science. Students will also require a C / 4/5 grade in GCSE Maths at intermediate or higher tier (GCSE Numeracy not included).



A Level Religious Studies (Philosophy, Ethics and Religion)

The course aims to develop understanding and knowledge of a wide variety of concepts across philosophy, ethics and core religious beliefs, movements and practices in one of the main world religions.

AS Level consists of an introduction to Christianity and an introduction to Philosophy of Religion and Ethics.

A2 Level consists of further study of Christianity, including the topics of religious figures and sacred texts, and study of significant historical and social development in religious thought.

CAN BE STUDIED AT:

DEESIDE SIXTH

YALE SIXTH

ENTRY REQUIREMENTS

5 GCSEs grade A*-C / 9-5 including English Language / Welsh 1st Language and Maths (not Numeracy). Students do not need to have studied Religious Studies at GCSE, but should have achieved a B / 6 grade if they have.

A Level Sociology

Key topic areas are: socialisation, culture, identity, the family, education, research methods, social class, gender, ethnicity, age, crime and deviance.

No prior knowledge of the subject is required but an interest in, and awareness of current political and social issues is key. Lessons include a range of teaching methods but the most popular are the debates the subject content can generate. Students are required to research, analyse, assess and evaluate sociological theories, equipping them with a wide range of transferable skills.

CAN BE STUDIED AT:

DEESIDE SIXTH

YALE SIXTH

ENTRY REQUIREMENTS

5 GCSEs grade A*-C / 9-5 including English Language / Welsh 1st Language and Maths (not Numeracy).



A Level Spanish

Spanish is one of the most widely spoken languages in the world, and is a great qualification if you want to have career opportunities in the UK and abroad in the future.

The course includes all 4 key skills for language: speaking & listening, reading & writing. We also have a Spanish Language Assistant so students can practise their oral skills with a native speaker. There is a strong emphasis on grammar and Spanish culture, history, customs and traditions, as well as film and literature. You need to be committed to learning a language but there is also plenty of opportunity to enjoy yourselves with tapas evenings, film trips, conversation classes, guest speakers and a trip to Spain.

CAN BE STUDIED AT:

YALE SIXTH

ENTRY REQUIREMENTS

5 GCSEs grade A*-C / 9-5 including English Language / Welsh 1st Language, Maths (not Numeracy) and Spanish.

A Level Welsh (First Language)

First Language Welsh is aimed at students who completed First Language Welsh at GCSE and is designed to encourage students to communicate correctly and fluently, both orally and in writing, write creatively and factually for a range of purposes, analyse familiar and unfamiliar texts independently, listen and respond to the opinions of others when expressing a point of view, express an independent opinion, based on knowledge and understanding of literary and factual texts and respond in Welsh with clarity, in a relevant, confident and structured manner.

First Language Welsh is delivered exclusively through the medium of Welsh.

This course is available to full time learners who wish to study the AS and A Level in Welsh. AS/A Level Welsh is an extremely valuable A Level for those who pursue careers within Wales.

CAN BE STUDIED AT:

DEESIDE SIXTH YALE SIXTH

ENTRY REQUIREMENTS

5 GCSEs grade A*-C / 9-5 including Maths (not Numeracy) and Welsh 1st Language at grade B / 6 or above.



A Level Welsh (Second Language)

Second Language Welsh A Level is designed to encourage students to communicate correctly and fluently, both orally and in writing, write creatively and factually for a range of purposes, analyse familiar and unfamiliar texts independently, listen and respond to the opinions of others when expressing a point of view, express an independent opinion, based on knowledge and understanding of literary and factual texts and respond in Welsh with clarity, in a relevant, confident and structured manner.

This course is available to full time learners who wish to study the AS and A Level in Welsh as a Second Language. It is an excellent qualification to support any students looking to pursue a career in Wales.

CAN BE STUDIED AT:

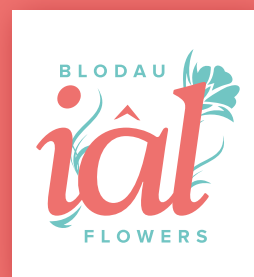
DEESIDE SIXTH

YALE SIXTH

ENTRY REQUIREMENTS

5 GCSEs grade A*-C / 9-5 including Maths (not Numeracy) and Welsh 2nd Language at grade B / 6 or above.





01978 548819

INFO@IALFLOWERS.CO.UK

WWW.IALFLOWERS.CO.UK



@IALFLOWERS

TAP OR CLICK HERE



to visit the
website

For all your creative floristry needs

Based at Coleg Cambria Yale, in the heart of Wrexham town centre, we are here to service all your floristry needs.

Our dedicated staff are on hand to bring your wedding or special occasion to life, create bespoke bouquets, help with funeral flowers and not forgetting our seasonal gift range which is sure to have something for everyone.

**To get in touch please
visit www.ialflowers.co.uk**

A young man with dark hair is wearing a white VR headset and holding two white VR controllers. He is wearing a white hoodie and a blue lanyard with a student ID badge. The background is a blurred indoor setting with a computer monitor visible. A large white circle is overlaid on the center of the image, containing the text 'Practical Courses' in orange.

Practical Courses

Welcome to Practical Courses



These courses are mainly two year courses, equivalent to studying three A Levels. These courses blend practical, career focused skills and academic study to prepare you for direct entry into employment, university or apprenticeships.

Most of these courses have a work experience element attached to them. Practical courses are typically assessed by coursework and observation of competence in practical skills.

LEARN IN WELSH

All of our practical courses can be assessed through the medium of Welsh.

Our Sites & Facilities

Bersham Road

TAP OR CLICK HERE



to take a tour of this site

Cambria Bersham Road boasts some of the best facilities in the region. We have invested extensively to ensure we offer you the best equipment and technology to help with your study.

Our site has recently had an £8.5m redevelopment which included a new state-of-the-art Engineering Technology Centre, Construction, Welding and Motor Vehicle workshops, which provide world-class education.



Our Sites & Facilities

Deeside

Cambria Deeside has an excellent reputation and after extensive investment is home to Deeside Sixth and the University Centre.

The award-winning Engineering Centre of Excellence features world-class engineering facilities and the sports facilities are some of the best in the region.

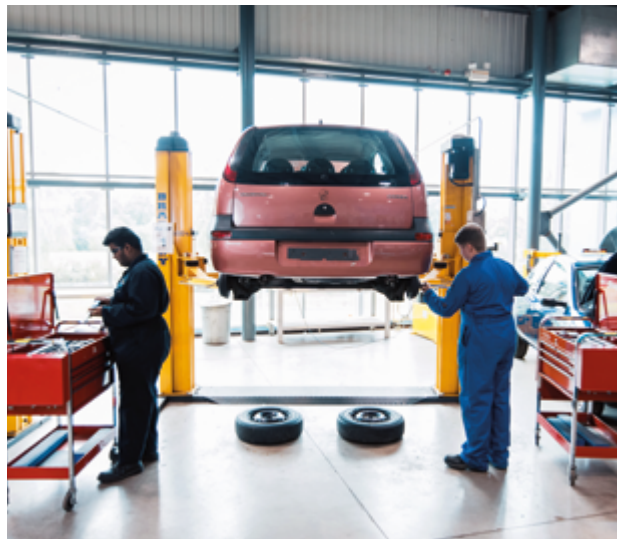
Studying at Deeside allows for hands-on experience in our training salons, sound studio and newly refurbished athletics track.



TAP OR CLICK HERE



to take a tour of this site



Cambria Yale has a long-standing reputation for excellence and is home to Yale Sixth, many vocational courses and apprenticeships.

Yale features an impressive range of facilities with extensive resources and has recently undergone a £20m redevelopment. Further developments are underway with the new Healthcare and Therapies Centre of Excellence coming in 2024.

Specialist teaching facilities include well equipped Science laboratories, computer suites and art studios. All students have access to the latest technology and are encouraged to use the university style library which has space over three floors to undertake private study.

Please see course pages for further details.



TAP OR CLICK HERE



to take a tour of this site



Siobhan Jones

Studied Level 2 & 3 Health & Social Care

“During my time at Coleg Cambria I was able to develop strong relations with the tutors within the Health and Social Care department. I always felt as though I could approach the staff with any concerns or worries, I was facing in which I was always supported to the best of their ability.

“Through studying Health and Social Care at college, it prepared me for my next step in university by learning about a wide range of subjects ranging from health conditions to safeguarding.”



Hear from our students



Llewelyn Jerman

Level 3 Agricultural Engineering

“I live on a farm at home. My Dad is good with the livestock but not as good with machinery, which is why I wanted to learn that side - to bring something new to the farm - although I'd definitely like to experience working abroad at some stage too. There are a lot of career opportunities in this area of study. It's a vast sector with lots of varied roles.

“I like the relationship we have with the tutors at college, and the sense of community here at Coleg Cambria.”

James Holmes

Studied Level 3 Enhanced Engineering

“One of the parts of the course which I enjoyed the most was the mechanical principles, as it contextualised much of what I had learned throughout my experience in mechanics in A Level Maths. I also enjoyed using the practical facilities the College possesses, such as the CNC machines, which allowed me to gain an insight into an area of engineering that I had no experience in prior to the course.

“Over the next 3 years, I will be completing a degree in Engineering through Swansea University, which will be funded by Airbus.”



Halle Ennion

Studied Level 2 Beauty Therapy

“I am currently the Senior Apprentice at The Secret Spa, as I'm now Level 2 qualified and have begun my Level 3 course. My role is building up my client base within the salon, and learning my Level 4 skills on the job.

“I enjoyed everything about studying with Cambria this year, but the highlight of the year was competing in Welsh Skills and winning gold for the College in the Beauty Therapist category. The course I studied has helped hugely with understanding beauty as a whole and has prepared me with all the knowledge I need.”



Access to Higher Education




At Cambria all our Access to Higher Education (HE) programmes are **FREE OF CHARGE**. They prepare you to study for a degree and are designed for people who left school/college without the usual qualifications.

The courses offer a one year route to degree level studies leading to a variety of careers and are open to students with substantial life experiences gained since leaving school. Many of our Access to HE students have gone on to succeed at university and pursued new careers that they had never thought possible.

We deliver our courses flexibly, including Access courses where you can attend 4 days a week on site, blended learning where you attend site 1 day per week and the rest remotely in your own time and a blended online route where you receive live streamed sessions 1 day a week with the rest completed remotely. You can study in a way that suits you!



TAP OR CLICK HERE

 for case studies, videos and more

DEGREE LEVEL

courses available in this subject - see page 99

FROM CAMBRIA TO YOUR CAREER

- **Social Work**
- **Business**
- **Youth & Community Work**
- **Nursing**
- **Midwifery**
- **Humanities**
- **Teaching**
- **Health & Social Care**
- **Criminal Psychology**

FULL TIME COURSES

For Entry Requirements, see page 05

LEVEL	COURSE	SITES
LEVEL 1	Preparation for Study and Career Development	Deeside or Yale
LEVEL 3	Access to HE - Health Care	Deeside or Yale
LEVEL 3	Access to HE - Humanities and Social Science	Yale
LEVEL 3	Blended Access to HE - Health Care	Deeside or Yale
LEVEL 3	Blended Access to HE - Engineering	Deeside
LEVEL 3	Blended Access to HE - Health Care (January Start)	Deeside or Yale
LEVEL 3	Access to HE - Health Care Online (January Start)	Online

Courses correct at the time of printing, please visit our website for the latest information.



FREE* TRANSPORT FOR FULL TIME STUDENTS
AGED 16-18, LIVING MORE THAN 3 MILES AWAY
*subject to eligibility, information correct at time of printing

Beauty, Spa & Complementary Therapies



Are you creative and a good communicator? Do you want to help others look and feel good about themselves?

If you are passionate about all things beauty and have a desire to learn new skills, then the beauty industry may be for you. The beauty industry needs people who have great communication skills, are creative, are willing to learn and are passionate about their work.

Our courses will ensure that you have the knowledge and skills to help clients look and feel their very best. You will work with high end product brands in our state-of-the-art commercial salons to develop your skills and build confidence.

TAP OR CLICK HERE



for case studies, videos and more

APPRENTICESHIPS

available in this subject - see page 22

FROM CAMBRIA TO YOUR CAREER

- Beauty Therapist
- Salon Manager
- Complementary Therapist
- Spa Therapist
- Makeup Artist
- Nail Technician
- Lecturer
- Trainer



FULL TIME COURSES

For Entry Requirements, see page 05

LEVEL	COURSE	SITES
ENTRY	Entry to Hair & Beauty	Deeside or Yale
LEVEL 1	Hair & Beauty	Deeside or Yale
LEVEL 2	Diploma in Beauty Therapy, Makeup and Nails	Deeside
LEVEL 2	Diploma in Beauty Therapy	Yale
LEVEL 2	Diploma in Hair and Makeup Artistry	Yale
LEVEL 3	Diploma in Beauty Therapy Treatment and Nails	Deeside
LEVEL 3	Diploma in Beauty and Spa Therapy	Yale

Courses correct at the time of printing, please visit our website for the latest information.

**EMPLOYERS
WE WORK
WITH:**



Do you receive additional support at school? See page 12

Business, Management & Leadership



Business, Management and Leadership offers diverse, exciting and rewarding career opportunities throughout a wide range of roles across different industries and sectors.

A career within business, management and leadership will encourage a multiskilled approach, enabling you to be ready for the fast moving modern world. Experienced tutors will teach you the importance of interpersonal skills, teamwork, innovation and the ability to adapt and be adaptable in an ever changing business environment.

We have strong links with businesses and you will learn about running your own business, hands-on planning, organisation and management so you can develop the skills and knowledge needed for a successful career.



TAP OR CLICK HERE

 for case studies, videos and more

DEGREE LEVEL

courses available in this subject - see page 99

APPRENTICESHIPS

available in this subject - see page 22

LEARN IN WELSH

available in this subject - see page 07

- FROM CAMBRIA TO YOUR CAREER**
- Marketing Manager
 - Event Manager
 - Public Relations Manager
 - Entrepreneur

FULL TIME COURSES For Entry Requirements, see page 05

LEVEL	COURSE	SITES
LEVEL 1	Business, Travel and Events	Yale
LEVEL 2	Extended Certificate in Business	Yale
LEVEL 3	Foundation Diploma in Business (Enterprise and Entrepreneurship)	Yale

Courses correct at the time of printing, please visit our website for the latest information.

**EMPLOYERS
WE WORK
WITH:**



**FREE* TRANSPORT FOR FULL TIME STUDENTS
AGED 16-18, LIVING MORE THAN 3 MILES AWAY**
*subject to eligibility, information correct at time of printing

Childcare, Childhood Studies & Playwork



Have you always wanted to work with children and feel you can make a difference to their lives? A career in childcare and education may be for you.

The childcare industry is a hugely rewarding and exciting sector to work in. Our courses will ensure you have the specialist skills you need to meet the changing needs of the sector and to work in this field.

Our childcare courses are based around work experience, supported by our expert tutors/assessors who will work with you to develop your knowledge and skills in caring for children as well as supporting their learning and development.



TAP OR CLICK HERE



for case studies, videos and more

DEGREE LEVEL

courses available in this subject - see page 99

APPRENTICESHIPS

available in this subject - see page 22

LEARN IN WELSH

available in this subject - see page 07

FROM CAMBRIA TO YOUR CAREER

- Play Practitioner
- Nursery Practitioner
- Psychologist
- Youth Worker

FULL TIME COURSES

For Entry Requirements, see page 05

LEVEL	COURSE	SITES
ENTRY	Entry to Health, Social and Childcare	Deeside or Yale
LEVEL 1	Health, Social and Childcare	Deeside or Yale
LEVEL 2	Health, Social and Childcare	Deeside or Yale
LEVEL 2	Children's Care, Play Learning and Development	Deeside or Yale
LEVEL 3	Health, Social and Childcare	Deeside or Yale
LEVEL 3	Children's Care, Play Learning and Development	Deeside or Yale

Courses correct at the time of printing, please visit our website for the latest information.

**EMPLOYERS
WE WORK
WITH:**



Construction & Building Services



Can you see yourself working professionally in the construction industry, or even running your own business one day?

The building services industry is a large employment market and offers a wide variety of opportunities for those wishing to work in domestic, commercial, agricultural and industrial environments.

Develop your skills and knowledge for a successful career in the electrical or plumbing trades. Learn using our state-of-the-art facilities which have undergone a major £8.5m refurbishment.

All learners (with the correct entry requirements) in the Institute of Technology - Building Service Engineering area of study begin on Intermediate courses. At this level students develop the essential knowledge, hands-on skills and trade techniques needed to prepare them for progression to the level of study in their chosen trade at Cambria. Commencing onto the Advanced courses, learners are challenged to undertake more demanding tasks that help prepare them for a successful career in their chosen field.



TAP OR CLICK HERE



for case studies, videos and more

APPRENTICESHIPS

available in this subject - see page 22

FROM CAMBRIA TO YOUR CAREER

- **Contracts Manager**
- **Building Services Engineer**
- **Electrician**
- **Project Manager**
- **Site Supervisor**
- **Heating & Ventilation Engineer**
- **Plumber**
- **Technician**
- **Gas Installer**

FULL TIME COURSES

For Entry Requirements, see page 05

LEVEL	COURSE	SITES
LEVEL 1	Electrical Installation & Plumbing	Bersham or Deeside
LEVEL 2	Intermediate Skills in Building Services (Plumbing & Electrical Installation)	Bersham or Deeside

Courses correct at the time of printing, please visit our website for the latest information.

**EMPLOYERS
WE WORK
WITH:**



**FREE* TRANSPORT FOR FULL TIME STUDENTS
AGED 16-18, LIVING MORE THAN 3 MILES AWAY**

*subject to eligibility, information correct at time of printing

Construction - Technical



The technical construction sector provides a wide range of services from building and civil engineering, highways maintenance, built environment and design, surveying and site supervision.

Our Construction Diploma is a pathway to apprenticeship which is designed to progress learners into employment, university or onto a full time Level 3 Apprenticeship. Over the past few years since its introduction, over 75% of learners have gained apprenticeships with local and international companies.

The Diploma gives learners the technical, practical and behavioural skills that employers want. A key part of the course is the work experience element which allows learners to put their skills into practice in a working environment.



TAP OR CLICK HERE

for case studies, videos and more

DEGREE LEVEL

courses available in this subject - see page 99

APPRENTICESHIPS

available in this subject - see page 22

FROM CAMBRIA TO YOUR CAREER

- Architect
- Highways Engineer
- Land & Building Surveyor
- Civil Engineer
- Quantity Surveyor
- Construction Manager

FULL TIME COURSES		For Entry Requirements, see page 05
LEVEL	COURSE	SITES
LEVEL 3	Diploma in Construction (Architecture/Surveying/Management)	Bersham Road

Courses correct at the time of printing, please visit our website for the latest information.

EMPLOYERS
WE WORK
WITH:



Construction - Trades



The construction industry is one of the largest employment sectors in the UK and can offer high earnings for those skilled in the construction trades.

The industry offers a huge variety of career opportunities across hundreds of trades. Construction today is a modern industry with digital, design and sustainability focused office careers as well as craft based.

Industry experienced tutors are willing to support you in developing your practical skills and theory using our state-of-the-art facilities at Deeside or Bersham Road which has recently undergone a major £8.5m refurbishment.



TAP OR CLICK HERE



for case studies, videos and more

APPRENTICESHIPS

available in this subject - see page 22

FROM CAMBRIA TO YOUR CAREER

- Joiner
- Painter & Decorator
- Project Manager
- Bricklayer
- Construction Supervisor
- Plasterer
- Site Manager

FULL TIME COURSES

For Entry Requirements, see page 05

LEVEL	COURSE	SITES
ENTRY	Entry to Construction	Bersham or Deeside
LEVEL 1	Introductory Skills in Bricklaying	Bersham or Deeside
LEVEL 1	Introductory Skills in Carpentry & Joinery	Bersham or Deeside
LEVEL 1	Introductory Skills in Painting & Decorating	Bersham
LEVEL 2	Intermediate Skills in Construction - Carpentry and Joinery	Bersham or Deeside
LEVEL 2	Intermediate Skills in Construction - Bricklaying	Bersham or Deeside
LEVEL 2	Intermediate Skills in Construction - Painting & Decorating	Bersham
LEVEL 2	Intermediate Skills in Construction - Plastering	Bersham

Courses correct at the time of printing, please visit our website for the latest information.

**EMPLOYERS
WE WORK
WITH:**



**FREE* TRANSPORT FOR FULL TIME STUDENTS
AGED 16-18, LIVING MORE THAN 3 MILES AWAY**

*subject to eligibility, information correct at time of printing

Creative Industries - Art & Design



Are you passionate about art and design and see yourself working in the rapidly growing creative industries?

At Cambria you can study art and design courses at different levels, giving you the opportunity to explore a range of different disciplines, taught by highly qualified and award winning tutors.

You will learn in our specialist art and design facilities such as our photographic studio, design and research studios, printmaking workshop, Mac Suites and 3D workshop, which have been purposely designed to meet the creative needs of our students.

You can explore a variety of art and design disciplines and develop your skills in drawing, painting, textiles, graphics, CAD, photography, printmaking and sculpture to develop and shape your creative abilities.

TAP OR CLICK HERE



for case studies, videos and more

FROM CAMBRIA TO YOUR CAREER

- **Product Designer**
- **Interior Designer**
- **Architect**
- **Art Director**
- **Visual Artist**
- **Graphic Designer**
- **Animator**
- **Photographer**
- **Fashion Designer**



FULL TIME COURSES

For Entry Requirements, see page 05

LEVEL	COURSE	SITES
ENTRY	Entry to Art	Yale
LEVEL 1	UAL Diploma in Art, Design and Media	Yale
LEVEL 1	UAL Diploma in Digital Art	Yale
LEVEL 1	Neuro Art*	Yale
LEVEL 2	UAL Diploma in Art and Design	Yale
LEVEL 3	UAL Diploma in Art and Design	Yale
LEVEL 3/4	Diploma in Foundation Studies Art and Design (Pre Degree)	Yale

Courses correct at the time of printing, please visit our website for the latest information.

*Neuro courses are designed specifically for young people aged 16-25 who have complex social communication difficulties.

Creative Industries - Creative Media Production




In Creative Media Production you will experience and explore the practical and theoretical aspects of contemporary media industries including; film, editing, advertising, print media, journalism, animation, photography, games design, app development and radio broadcasting.

These courses support and encourage you to develop your knowledge, skills and understanding of the media industry and work to fully prepare you for employment within the industry or to study at a higher level.



TAP OR CLICK HERE

 for case studies, videos and more

DEGREE LEVEL

courses available in this subject - see page 99

FROM CAMBRIA TO YOUR CAREER

- Social Media Manager
- Public Relations Officer
- Games Design
- Stage Manager
- TV and Film Producer
- Screenwriter/ Copywriter
- Video Editing

FULL TIME COURSES

For Entry Requirements, see page 05

LEVEL	COURSE	SITES
LEVEL 1	UAL Diploma in Digital Art	Yale
LEVEL 1	Neuro Media*	Deeside
LEVEL 2	UAL Diploma in Creative Media	Deeside
LEVEL 3	UAL Diploma in Creative Media	Deeside

Courses correct at the time of printing, please visit our website for the latest information.
*Neuro courses are designed specifically for young people aged 16-25 who have complex social communication difficulties.



FREE* TRANSPORT FOR FULL TIME STUDENTS
AGED 16-18, LIVING MORE THAN 3 MILES AWAY
*subject to eligibility, information correct at time of printing

Creative Industries - Music Performance & Production



Music Performance and Music Production provides students with the opportunity to explore a range of technical skills and specialised theoretical knowledge essential for contemporary audio production.

As a music student you will learn a variety of skills including music and musical performance, songwriting, musical ensemble skills, music theory, arranging and production. As a routine part of the course you will have the opportunity to participate in a range of public performances.

When studying Music Performance or Production at Cambria you have the opportunity to work in state-of-the-art facilities, using the latest technology. This includes access to performance spaces where you can develop your live performance skills as well as test your production knowledge.

TAP OR CLICK HERE



for case studies, videos and more

DEGREE LEVEL

courses available in this subject - see page 99

FROM CAMBRIA TO YOUR CAREER

- **Sound Engineer**
- **Music Producer**
- **Radio Producer**
- **TV or Film Sound Recordist**
- **Editor**



FULL TIME COURSES

For Entry Requirements, see page 05

LEVEL	COURSE	SITES
LEVEL 1	UAL Diploma in Performing and Production Arts and Music	Yale
LEVEL 2	UAL Diploma in Music Performance	Yale
LEVEL 2	UAL Diploma in Music Production	Deeside
LEVEL 3	UAL Diploma in Music Performance	Yale
LEVEL 3	UAL Diploma in Music Production	Deeside

Courses correct at the time of printing, please visit our website for the latest information.

Creative Industries - Performing Arts & Backstage Theatre Production

If you aspire to a career in music, stage or screen then Cambria is the place to study.

Performing Arts

Our Performing Arts courses offer classes that include dance, contemporary theatre, devising performance and musical theatre, each contributing to developing and improving performance and equipping you with skills which prepare you for the demands of today's performance industry. As a Performing Arts student you will have the opportunity to showcase your talents in a number of performances in our new industry standard performance space.

Backstage Theatre Production

This exciting course provides you with the technical skills necessary to support live event productions; from festivals to theatre, conferences to concerts. The course equips you with a range of transferable skills including production design and planning, lighting design and lighting operations, prop making, event and stage management, video and audio production, sound design and production.



TAP OR CLICK HERE



for case studies,
videos and more

LEARN IN WELSH

available in this subject -
see page 07

**FROM CAMBRIA
TO YOUR CAREER**

- Actor
- Choreographer
- Producer
- Stage Manager
- Dancer
- Artistic Director
- Sound Designer
- Theatre Technician
- Lighting Designer/
Operator



FULL TIME COURSES

For Entry Requirements, see page 05

LEVEL	COURSE	SITES
LEVEL 1	Diploma in Music, Performing and Production Arts	Yale
LEVEL 2	UAL Diploma in Performing Arts	Yale
LEVEL 3	UAL Diploma in Performing Arts	Yale
LEVEL 3	UAL Diploma in Backstage Theatre Production	Yale

Courses correct at the time of printing, please visit our website for the latest information.



**FREE* TRANSPORT FOR FULL TIME STUDENTS
AGED 16-18, LIVING MORE THAN 3 MILES AWAY**
*subject to eligibility, information correct at time of printing

Digital Technologies, Computing & IT



Do you have a strong interest in computers and the digital world?

Studying Digital Technologies at Cambria allows you to work with innovative products and cutting edge technology in the fastest growing sector in the world. Our tutors are industry experts, ready to share their experience with you, putting you in the best possible place to make the most of this digital environment.

Having a career in the digital sector is as varied as the area you are going into. As a first line IT Support Technician you might be responsible for dealing with various faults on a daily basis, whereas a Web Designer might work on long term projects with clients to ensure that their needs are totally met.

Whatever your career's chosen focus - human-user interaction, artificial intelligence, the internet of things, computer project management, data science, or a huge range of other areas - the Digital Technologies courses at Cambria will give you a firm grounding.

TAP OR CLICK HERE



for case studies, videos and more

DEGREE LEVEL

courses available in this subject - see page 99

APPRENTICESHIPS

available in this subject - see page 22

FROM CAMBRIA TO YOUR CAREER

- **Software Engineer**
- **App Developer**
- **Games Designer**
- **Practitioner**
- **Data Analyst**

FULL TIME COURSES

For Entry Requirements, see page 05

LEVEL	COURSE	SITES
ENTRY	Entry to IT	Yale
LEVEL 1	Diploma in IT Users	Deeside or Yale
LEVEL 1	NeuroTech*	Yale
LEVEL 2	Extended Certificate in Information and Creative Technology	Deeside or Yale
LEVEL 2	NeuroTech*	Yale
LEVEL 2	EAL Diploma in Applied STEM for Digital Engineering (Industry 4.0)	Deeside
LEVEL 3	Diploma in Digital Technologies (Digital Careers Pathway)	Deeside
LEVEL 3	Diploma in Computer Science (Software Engineering/Digital Technology)	Yale
LEVEL 3	Diploma in Games Development and IT	Yale
LEVEL 3	NeuroTech*	Yale

Courses correct at the time of printing, please visit our website for the latest information.

*Neuro courses are designed specifically for young people aged 16-25 who have complex social communication difficulties.

Engineering - Fabrication & Welding



Fabrication and welding allow for metal structures to be made into a range of shapes and sizes and are a huge part of many industries, such as engineering, construction, marine and more.

Fabrication and Welding at Cambria will allow you to learn skills in specialist workshops taught by industry trained staff.

Fabrication

Fabrication of metal refers to the building of metal structures. This is done via a variety of processes including cutting, bending, profiling, welding and assembling. Metals such as steel, aluminium and other ferrous and non-ferrous metals are used in the fabrication process.

Welding

The prepared metal from the fabrication process is then welded together using a range of techniques and procedures. Welding processes often include 'arc', which is a welding technique that uses a power supply in order to create an electric arc between the electrode on the welding rod and the material itself.

TAP OR CLICK HERE



for case studies, videos and more

DEGREE LEVEL

courses available in this subject - see page 99

FROM CAMBRIA TO YOUR CAREER

- Welder
- Ironworker
- Pipe Fitter
- Assembler and Fabricator
- Sheet Metal Worker



FULL TIME COURSES

For Entry Requirements, see page 05

LEVEL	COURSE	SITES
LEVEL 1	Certificate in Fabrication and Welding	Bersham Road or Deeside
LEVEL 2	Diploma in Fabrication and Welding	Bersham Road or Deeside
LEVEL 3	Diploma in Fabrication and Welding	Bersham Road or Deeside

Courses correct at the time of printing, please visit our website for the latest information.

**EMPLOYERS
WE WORK
WITH:**



**FREE* TRANSPORT FOR FULL TIME STUDENTS
AGED 16-18, LIVING MORE THAN 3 MILES AWAY**

*subject to eligibility, information correct at time of printing

Engineering - Manufacturing & Maintenance



Our Engineering Centre of Excellence at Deeside and our Engineering Technology Centre at Bersham Road make up the most successful and sector leading training facility in the UK.

Cambria has strong links with engineering businesses to allow you to progress your engineering career. You will learn using the latest equipment such as Computer Numerical Control (CNC) machines, robotics, hydraulics, pneumatics and electronic rigs. Depending on your course or apprenticeship you can learn a variety of mechanical and electrical techniques including aerospace engineering, electrical maintenance, CAD, mechanical, electronic and manufacturing engineering.



TAP OR CLICK HERE



for case studies, videos and more

DEGREE LEVEL

courses available in this subject - see page 99

APPRENTICESHIPS

available in this subject - see page 22

FROM CAMBRIA TO YOUR CAREER

- Aerospace Engineer
- Computer Aided Designer
- Mechanical Engineer
- Electrical Engineer

FULL TIME COURSES

For Entry Requirements, see page 05

LEVEL	COURSE	SITES
LEVEL 1	Engineering	Bersham Road
LEVEL 1	Engineering (Mechanical)	Deeside
LEVEL 2	Diploma in Engineering	Bersham Road or Deeside
LEVEL 2	Enhanced Engineering (Pathway to Apprenticeship)	Bersham Road
LEVEL 3	Enhanced Engineering (Pathway to Apprenticeship)	Bersham Road or Deeside
LEVEL 3	Award in Engineering	Deeside
LEVEL 3	Diploma in Maintenance Engineering (Craft Route)	Bersham Road or Deeside
LEVEL 3	Access to HE Diploma in Engineering	Deeside

Courses correct at the time of printing, please visit our website for the latest information.

**EMPLOYERS
WE WORK
WITH:**



Engineering - Motor Vehicle



Cambria is one of the most successful automotive training centres in the UK, offering vehicle maintenance and repair at all levels including fast-fit and hybrid vehicle qualifications.

Learn using the latest technology and get taught by industry professionals who will help you develop your skills in vehicle service, diagnostic training and air conditioning. Depending on your course or apprenticeship you will learn how to diagnose more complex faults and repair major units, and learn test and overhaul procedures for engine systems, chassis, transmission and electrical systems.

Learn in our realistic workshop facilities featuring industry standard equipment including valeting bays and diagnostic areas.

Most students progress directly into employment in the industry after college and some students progress to university; now is the time to join this exciting industry.



TAP OR CLICK HERE



for case studies, videos and more

APPRENTICESHIPS

available in this subject - see page 22

FROM CAMBRIA TO YOUR CAREER

- **Mechanic**
- **Advanced Diagnostics**
- **Motor Vehicle Technician**
- **Motor Sport**
- **Body Repair Specialist**
- **Quality Engineer**
- **Self Employment**

FULL TIME COURSES

For Entry Requirements, see page 05

LEVEL	COURSE	SITES
ENTRY	Entry to Motor Vehicle	Bersham Road
LEVEL 1	Diploma in Motor Vehicle	Bersham Road or Deeside
LEVEL 2	Diploma in Motor Vehicle	Bersham Road or Deeside
LEVEL 3	Diploma in Motor Vehicle	Bersham Road or Deeside

Courses correct at the time of printing, please visit our website for the latest information.

**EMPLOYERS
WE WORK
WITH:**



Dickens



eStar.



**FREE* TRANSPORT FOR FULL TIME STUDENTS
AGED 16-18, LIVING MORE THAN 3 MILES AWAY**

*subject to eligibility, information correct at time of printing

The Esports industry is global, dynamic, exciting and fast growing. Our Esports courses offer you the opportunity to learn about the sector and develop the skills that the industry needs their employees of the future to have. There are a wide range of diverse, exciting and rewarding career opportunities available to you in many organisations locally, nationally and internationally.

A career within Esports requires you to develop many skills, such as leadership skills, problem solving, strategic thinking, communication, teamwork, and analytical skills. Your tutors will teach you the skills that will prepare you for the fast moving, dynamic world of Esports and you will have opportunities to practise these skills during your time on the course.



TAP OR CLICK HERE



for case studies,
videos and more

FROM CAMBRIA TO YOUR CAREER

- Marketing Manager
- Events Manager
- Advertising
- Design
- Business Development
- Sales
- Media
- Merchandising
- Branding
- Professional Player
- Coach
- Shoutcaster
- Analyst
- Journalist
- Streamer/Influencer

FULL TIME COURSES

For Entry Requirements, see page 05

LEVEL	COURSE	SITES
LEVEL 2	Diploma in Esports	Deeside
LEVEL 3	Diploma in Esports - Digital Marketing and Enterprise	Deeside

Courses correct at the time of printing, please visit our website for the latest information.

Fashion Business & Retail



If you want a career in fashion and retailing our Fashion Business and Retail courses offer you the opportunity to learn about the sector and develop the skills that the industry needs their employees of the future to have.

There are a wide range of diverse, exciting and rewarding career opportunities available to you in many organisations locally, nationally and internationally.

A career within the fashion industry requires you to develop many skills, such as interpersonal skills, creativity, teamwork and innovation. Your tutors will teach you the skills that will prepare you for the fast moving, dynamic world of fashion and you will have opportunities to practise these skills during your time on the course.

Our courses also include links with businesses from the fashion and retail sector, as well as entrepreneurs and fashion influencers.

TAP OR CLICK HERE



for case studies, videos and more

FROM CAMBRIA TO YOUR CAREER

- **Marketing Manager**
- **Event Manager**
- **Content Creator**
- **Influencer**
- **Entrepreneur**
- **Retail Manager**
- **Merchandising Manager**
- **Food Stylist**
- **Retail Staging**



FULL TIME COURSES

For Entry Requirements, see page 05

LEVEL	COURSE	SITES
LEVEL 2	UAL Diploma in Fashion Business and Retail	Deeside
LEVEL 3	UAL Diploma in Fashion Business and Retail	Deeside

Courses correct at the time of printing, please visit our website for the latest information.



A career in Floristry is extremely rewarding as your creative skills become a valuable part of others' special occasions.

The industry is thriving across the UK with clients seeking a professional and personal touch for their events. Our Floristry tutors are highly skilled experts in their field and our comprehensive courses will enhance your natural creativity, build your business skills and increase your employability in a competitive market.

They also provide an opportunity to study international floral design, interior landscaping, botany, horticulture and health and safety.

TAP OR CLICK HERE



for case studies,
videos and more

FROM CAMBRIA TO YOUR CAREER

- **Retail Florist**
- **Self Employed Florist**
- **Wedding Florist**
- **Floral Designer/
Florist**
- **Wholesale Buyer**
- **Events Florist**
- **Demonstrator**
- **Freelance Florist**



TAP OR CLICK HERE



to visit the
lâl Flowers website



FULL TIME COURSES

For Entry Requirements, see page 05

LEVEL	COURSE	SITES
LEVEL 1	Floristry	Yale
LEVEL 2	Technical Certificate in Floristry	Yale
LEVEL 3	Technical Diploma in Floristry	Yale

Courses correct at the time of printing, please visit our website for the latest information.

**EMPLOYERS
WE WORK
WITH:**



flowers at...
number30



Hairdressing & Barbering



Hairdressing courses prepare you to work in one of the most stylish and fashionable industries. If you can see yourself working professionally in this exciting, creative industry then hairdressing may be for you.

You will learn a range of technical and creative knowledge whilst gaining essential customer service skills in our commercial salon and you will be taught by industry experts in our modern specialist facilities. Within salons we use industry leading brands such as L'Oréal Professional and Avlon textured and coiled hair care high-end products as well as the latest equipment to prepare you for entering the workplace.

You will also develop your sales skills to ensure you provide your clients with a first class experience.



TAP OR CLICK HERE

for case studies, videos and more

APPRENTICESHIPS

available in this subject - see page 22

- FROM CAMBRIA TO YOUR CAREER**
- Hairdresser/Hair Stylist
 - TV and Media Stylist
 - Hairdressing Assessor
 - Cruise Liner Stylist
 - Salon Manager
 - Lecturer/Trainer
 - Barber

FULL TIME COURSES		For Entry Requirements, see page 05
LEVEL	COURSE	SITES
ENTRY	Entry to Hair and Beauty	Deeside or Yale
LEVEL 1	Hair and Beauty	Deeside or Yale
LEVEL 2	Diploma in Barbering	Yale
LEVEL 2	Diploma in Hairdressing	Deeside or Yale
LEVEL 3	Diploma in Hairdressing	Deeside or Yale
LEVEL 3	Diploma in Barbering	Yale

Courses correct at the time of printing, please visit our website for the latest information.

EMPLOYERS WE WORK WITH:



FREE* TRANSPORT FOR FULL TIME STUDENTS AGED 16-18, LIVING MORE THAN 3 MILES AWAY
*subject to eligibility, information correct at time of printing

Health & Social Care



If you are a compassionate person and enjoy helping people, a career in the care sector may be for you. The care industry is a hugely rewarding and exciting sector to work in.

Experienced tutors will prepare you for work in the Health and Social Care sector. You will study a range of topics to develop and demonstrate your knowledge, skills and understanding within the context of Health and Social Care Services which includes current issues in relation to Health and Social Care, principles of care and safe practice, factors affecting individual growth and development and the impact on care and support needs, promoting rights, supporting individuals at risk and working within the health care sector.

There is a significant placement element attached to the higher level course and you will be required to undertake a minimum of 100 hours in a relevant setting.

Level 3 students will achieve a Foundation Diploma in Year 1 and the Extended Diploma in Year 2.



TAP OR CLICK HERE

for case studies, videos and more

APPRENTICESHIPS

available in this subject - see page 22

FROM CAMBRIA TO YOUR CAREER

- Nurse
- Midwife
- Children’s Nurse
- Health Professional
- Social Worker
- Physiotherapist
- Paramedic
- Teacher

FULL TIME COURSES		For Entry Requirements, see page 05
LEVEL	COURSE	SITES
ENTRY	Entry to Health, Social and Childcare	Deeside or Yale
LEVEL 1	Health, Social Care and Childcare	Deeside or Yale
LEVEL 2	Health and Social Care	Deeside or Yale
LEVEL 3	Health and Social Care	Deeside or Yale

Courses correct at the time of printing, please visit our website for the latest information.

EMPLOYERS
WE WORK
WITH:



Hospitality & Catering



Are you passionate about food and drink? The hospitality and catering industry is one of the largest, most diverse career sectors in the world.

We have a range of courses to help you progress in this exciting industry that could see you working anywhere in the world.

You will gain practical, 'hands on' experience in our production kitchens and iâl Restaurant where lunches and dinners are prepared and served to the public. Cambria was also one of the first ambassadors for the Bronze award in Hospitality & Catering as part of the Wrexham Ambassador Scheme.

Learn from the best

Cambria and top chef Bryn Willams have launched the Bryn Williams Academy to positively influence the future generation of chefs and hospitality staff from across North East Wales. www.cambria.ac.uk/brynwilliamsacademy



TAP OR CLICK HERE



to visit the iâl Restaurant website

TAP OR CLICK HERE



for case studies, videos and more

DEGREE LEVEL

courses available in this subject - see page 99

APPRENTICESHIPS

available in this subject - see page 22

FROM CAMBRIA TO YOUR CAREER

- **Restaurant Manager**
- **Food and Drink Manufacturer**
- **Bar Manager**
- **Product Developer**
- **Chef**
- **Hotel Manager**
- **Waiter/Waitress**

FULL TIME COURSES

For Entry Requirements, see page 05

LEVEL	COURSE	SITES
LEVEL 1	Hospitality and Catering	Yale
LEVEL 2	Hospitality and Catering	Yale
LEVEL 3	Diploma in Professional Cookery	Yale
LEVEL 3	Diploma in Food & Beverage	Yale

Courses correct at the time of printing, please visit our website for the latest information.

EMPLOYERS WE WORK WITH:



FREE* TRANSPORT FOR FULL TIME STUDENTS
AGED 16-18, LIVING MORE THAN 3 MILES AWAY

*subject to eligibility, information correct at time of printing

Independent Living Skills

These courses are suitable for you if you have learning difficulties and/or disabilities and would like to explore and develop skills for life and work.

Our wide range of Life Skills pathways enable you to develop your personal, social and independence skills whilst improving opportunities for progression to employment and/or further study.

At our Northop site, you will gain real work skills in a range of areas such as animal care, workshop skills, Health and Beauty, car valeting, IT and admin and retail crafts.

Independent Living Skills are taught through practical activities such as cookery, domestic skills, money handling and community access.

Personal Development is taught through sessions in mindfulness, accessible sports and community projects. You may also choose to participate in our Duke of Edinburgh Programme.

TAP OR CLICK HERE



for case studies, videos and more

FROM CAMBRIA TO YOUR CAREER

- **Independent or Supported Living**
- **Progression to Further Education**
- **Paid, supported or voluntary employment**



FULL TIME COURSES

For Entry Requirements, see page 05

PATHWAY	COURSE	SITES
PATHWAY 2	Building Independence	Northop
PATHWAY 2	Learning for Life	Northop
PATHWAY 3	Building Resilience	Northop
PATHWAY 3	Exploring Work	Northop
PATHWAY 4	Project Search / Asda Supported Internship	Northop
PATHWAY 4	Gateway (Supported Internship)	Northop or Yale

Courses correct at the time of printing, please visit our website for the latest information.

Neurodiverse-centred Courses



Are you neurodiverse and looking for a course that can cater to your unique learning needs? Look no further! Our neurodiverse-centred courses are specifically designed to enable individuals with social communication conditions such as Autism to succeed academically.

Our experienced teaching staff incorporate highly engaging techniques and strategies that are tailored to individual learning styles. Whether you prefer visual aids, hands-on activities, or auditory stimulation, we have got you covered! Our courses are inclusive and understanding of diverse learning needs, and our instructors take the time to make sure everyone is comfortable and gets the most out of each session.

Not only will you gain valuable knowledge and skills in your chosen field, but you'll also improve your overall confidence and self-esteem as you discover new ways of learning that work for you.

Neuro courses are designed specifically for young people aged 16-25 who have complex social communication difficulties.

Entry requirements may differ to those on page 05 - please speak to a member of staff who will confirm with you.

TAP OR CLICK HERE



for case studies, videos and more



FULL TIME COURSES

For Entry Requirements, see page 05

LEVEL	COURSE	SITES
LEVEL 1	NeuroTech	Yale
LEVEL 1	Neuro Art	Yale
LEVEL 1	Neuro Animal Care	Northop
LEVEL 1	Neuro Media	Deeside
LEVEL 1	Neuro Creative Enterprise	Deeside
LEVEL 2	NeuroTech	Yale
LEVEL 2	Neuro Animal Care	Northop
LEVEL 3	NeuroTech	Yale

Courses correct at the time of printing, please visit our website for the latest information.



Science - Forensic & Criminal Investigation



If you are looking for an exciting career in a scientific role within the fields of forensics and criminal investigation then this is the course for you.

A career within this industry allows those who love science, are methodical and enjoy problem solving to use a variety of scientific techniques to help solve legal disputes and prove the guilt or innocence of suspects of crimes.

The course looks at how evidence can be gathered, analysed and shared in order to make informed decisions and solve problems.

Prifysgol Wrexham
Wrexham University

Students will also be supported by Wrexham University and will be expected to take part in project placements as well as being taught concepts by industry experts.

TAP OR CLICK HERE



for case studies, videos and more

FROM CAMBRIA TO YOUR CAREER

- University
- Analytical Chemist
- Biomedical Scientist
- Scene of Crime Officer
- Forensic Scientist
- Ballistics Analyst
- Forensic Radiographer
- Pathology Technician
- DNA Analyst
- Toxicologist



FULL TIME COURSES

For Entry Requirements, see page 05

LEVEL	COURSE	SITES
LEVEL 3	National Diploma in Forensic and Criminal Investigation	Yale

Courses correct at the time of printing, please visit our website for the latest information.

Sport & Fitness



If you are serious about sport then a course at Cambria is right for you. Our courses will give you an excellent insight into the professional sporting industry.

Wherever you see your future in the sports industry, we have the right course for you. Our courses will ensure that you develop the variety of skills and knowledge fundamental to successful progression in this exciting and rewarding area of work.

You will gain transferable skills to utilise in your future career. You will have access to some of the best facilities in Wales including the North Wales Indoor Athletics Centre (NWIAC), Lifestyle Fitness gym, sports hall, spin studio and stadium including the track. The new facilities at Yale also include a brand new gym, dance studio, sports hall and spin studio.



TAP OR CLICK HERE

for case studies, videos and more

DEGREE LEVEL

courses available in this subject - see page 99

APPRENTICESHIPS

available in this subject - see page 22

LEARN IN WELSH

available in this subject - see page 07

FROM CAMBRIA TO YOUR CAREER

- PE Teacher
- Fitness Instructor
- Sports Coach
- Sports Psychologist
- Physiotherapy

FULL TIME COURSES

For Entry Requirements, see page 05

LEVEL	COURSE	SITES
LEVEL 1	Diploma in Sport and Uniformed Public Services	Deeside or Yale
LEVEL 2	Sport	Deeside or Yale
LEVEL 3	Foundation Diploma in Sport	Deeside or Yale

Courses correct at the time of printing, please visit our website for the latest information.

EMPLOYERS WE WORK WITH:



FREE* TRANSPORT FOR FULL TIME STUDENTS AGED 16-18, LIVING MORE THAN 3 MILES AWAY
*subject to eligibility, information correct at time of printing

Step into Cambria



Step into Cambria is a transition year and is designed to help you overcome your barriers to learning and develop the skills needed for the next steps in your learning journey, whether that be on to a higher level course, Jobs Growth Wales+ programme or entering the workplace.

The course is designed to encourage learning outside of the classroom, to help develop softer skills such as confidence, communication and teamwork. These will be realised through achieving recognised qualifications that will help you to succeed and progress. In addition, you will benefit from specially allocated classrooms, learning support in every session and dedicated Maths and English tutors.

In the final term, supported tasters will be offered in different vocational areas to help you decide on your sector of interest.

If you answer yes to some of these statements then this could be the right course for you:

- **Not attended a mainstream school setting**
- **Been homeschooled**
- **Not attended a mainstream setting and need to be eased into college**
- **Not sat any exams**
- **Have very low-grade GCSEs**
- **Need support with Maths and English**
- **Struggle with anxiety and mental health**
- **Missed a lot of your education**
- **Struggle with busy classrooms**
- **Unfocused on a career path**

TAP OR CLICK HERE



for case studies, videos and more



STEP INTO CAMBRIA QUALIFICATIONS

LEVEL	QUALIFICATION	SITES
BRONZE	Duke of Edinburgh Award	Northop or Yale
ENTRY	Prince's Trust Achieve qualification	
ENTRY 3	Life & Living Skills programme*	

*Adapted to meet learner needs. Courses correct at the time of printing, please visit our website for the latest information.

Travel & The Visitor Economy



Travel and Tourism is the world's fastest growing industry and offers a huge choice of employment and travel opportunities. With the right training here at Cambria you can be a part of it.

Our courses will prepare you for exciting worldwide careers such as being an Overseas Representative or Cabin Crew, as well as roles within the growing tourism sector in Wrexham, Wales and across the UK.

You will be taught by industry experts and learn in our specialist facilities which include a practical teaching room and the use of current technology. You will gain a wide variety of transferable skills that you can utilise in your future career. Visits and trips play an important part in our courses and if you are over the age of 18 you may have the opportunity to complete a work placement overseas.



TAP OR CLICK HERE



for case studies, videos and more

DEGREE LEVEL

courses available in this subject - see page 99

FROM CAMBRIA TO YOUR CAREER

- **Travel Agent**
- **Cabin Crew**
- **Attraction Manager**
- **Hotel Manager**
- **Overseas Resort Rep**
- **Events Manager**
- **Tour Guide**

FULL TIME COURSES

For Entry Requirements, see page 05

LEVEL	COURSE	SITES
LEVEL 1	Business, Travel and Events	Yale
LEVEL 2	Travel and Tourism	Yale
LEVEL 3	Diploma in Travel and Tourism	Yale

Courses correct at the time of printing, please visit our website for the latest information.

**EMPLOYERS
WE WORK
WITH:**



Uniformed Public Services



Whoever you are and whatever your ambitions, Uniformed Public Services at Cambria can get you on the right track to a rewarding career doing a job you love to ensure that you fulfil your potential.

From Entry Level to Level 5, you will have the opportunity to develop the skills and knowledge required to find your place in the Uniformed Public Services. Our tutors have vast experience in the Armed Forces, Navy, Police and legal services. We have excellent links to fire, police, prison and paramedic services to ensure that you experience the full range of the uniformed public service sector.



TAP OR CLICK HERE

for case studies, videos and more

DEGREE LEVEL

courses available in this subject - see page 99

LEARN IN WELSH

available in this subject - see page 07

FROM CAMBRIA TO YOUR CAREER

- Armed Forces
- Ambulance Service
- Border Force
- Prison Service
- Fire Service
- Police Service
- Criminology

FULL TIME COURSES			For Entry Requirements, see page 05
LEVEL	COURSE	SITES	
LEVEL 1	Diploma in Sport and Uniformed Public Services	Deeside or Yale	
LEVEL 2	Diploma in Uniformed Public Services	Deeside or Yale	
LEVEL 3	Foundation Diploma in Public Services	Deeside or Yale	

Courses correct at the time of printing, please visit our website for the latest information.

EMPLOYERS
WE WORK
WITH:



HEDDLU
GOGLEDD CYMRU
NORTH WALES
POLICE





Land-based Courses

Welcome to Llysfasi

At Llysfasi, we are industry leaders in land-based education. The site sits in the beautiful North Wales countryside which lends itself as the perfect classroom for your land based studies.

Located in Ruthin, the site is easily accessed from across North and Mid Wales, as well as Cheshire, Wirral and Shropshire. Our partnerships with leading regional, national and global companies ensure our training and resources are outstanding and meet the needs of modern industry.



At Llysfasi student success is our priority. Our team of dedicated staff are here to inspire, motivate, challenge and help our learners maximise their potential, progressing to employment or Higher Education in the areas of our specialist industries.

Llysfasi is currently undergoing a major redevelopment with plans for a Farming Futures Sustainability Hub.



What can you study at Llysfasi?

- **Agricultural Engineering**
- **Agriculture**
- **Forestry and Countryside Management**

Please see course pages for further details.

LEARN IN WELSH

Courses available through the medium of Welsh or bilingually.

Our Sites & Facilities

Llysfasi

TAP OR CLICK HERE



to take a tour of
this site

The College farms 400 hectares in the Vale of Clwyd. Enterprises include sheep, dairy and beef with all students undertaking practical tasks as part of their studies.

Llysfasi provides:

- 250 pedigree Friesian/Holstein herd
- Links and partnerships with major dealer networks and machinery manufacturers
- Countryside estate and commercial forestry and woodlands
- Extensive fleet of the latest vehicles, tractors, field machinery and equipment
- Purpose built Agricultural Teaching Centre with laboratory facilities
- Industry Standard Engineering workshops
- Forestry and Conservation Workshops
- 3 sheep flocks - Lleyn, Welsh Mountain and Welsh Mules
- Suckler herd
- Beef finishing unit



Accommodation at Llysfasi

The accommodation at Llysfasi caters for both male and female full-time students and is located on the main site.

The rooms are extremely spacious and of a high quality, with free Wifi available throughout the facility. Each block has kitchen facilities which are equipped with a kettle, toaster, fridge and microwave.

There is also a games room which includes a wide screen television, pool table and table tennis table. Students also have access to the College fitness suite.

For younger residential students, there are hostel wardens in place, providing friendly support to get you through the year. Trips to the cinema, leisure centre and other requested activities are organised by the wardens.

Our on-site refectory provides catering facilities, with hot and cold meals for residential and non-residential students.



Agricultural Engineering



Our Agricultural Engineering courses are designed to equip you with the skills and knowledge necessary to excel in this ever-advancing industry.

The state-of-the-art industry standard engineering workshop with the latest machinery and technologies, together with the 400 hectare commercial farm, provide you with the opportunity to gain hands-on experience within a commercial working environment.

Using innovative and up-to-date technology, covering both agricultural and plant machinery, you will develop your skills and experience as machinery operators or mechanics, covering topics including; precision farming machinery operation, GPS Auto Steering, specialist computer diagnostics, workshop practices, welding and fabrication, electronics, hydraulics, fuel, braking, steering, and suspension systems.

We are the chosen provider for the AGCO Diploma Training Scheme for Massey Ferguson, Fendt and Valtra, as well as the Kubota Diploma Training Scheme.

TAP OR CLICK HERE



for case studies, videos and more

LEARN IN WELSH

available in this subject - see page 07

FROM CAMBRIA TO YOUR CAREER

- **Agricultural Engineer**
- **Design Engineer**
- **Agricultural Contractor**

FULL TIME COURSES

For Entry Requirements, see page 05

LEVEL	COURSE	SITES
ENTRY	Entry to Land-based Industries	Llysfas
LEVEL 1	Diploma in Land-based Industries	Llysfas
LEVEL 2	Technical Certificate in Land-based Machinery	Llysfas
LEVEL 3	Advanced Technical Diploma in Agricultural Engineering	Llysfas
LEVEL 3	AGCO Diploma Training Scheme	Llysfas
LEVEL 3	Kubota Diploma Training Scheme	Llysfas
LEVEL 3	Kubota Groundcare Diploma Training Scheme	Llysfas
LEVEL 3	Kubota Parts and Service Records Diploma Training Scheme	Llysfas

Courses correct at the time of printing, please visit our website for the latest information.

EMPLOYERS WE WORK WITH:



Do you receive additional support at school? See page 12

AGCO Diploma Training Scheme



We have partnered with AGCO to create the AGCO Diploma Training Scheme. This industry approved training is designed to allow young agricultural engineers to progress into positions within AGCO dealerships across the UK.

This qualification covers all of the skills, knowledge and understanding required in the agricultural engineering industry. You will study a wide range of areas that include health and safety, calculations for service engineering and workshop processes.

You will learn how to repair engines, vehicle systems, electric and hydraulic systems, test electronic systems, mechanical power transmission systems, synchromesh transmissions and clutches, powershift transmissions and hydrostatic or hydromechanical (CVT) transmissions.

You will also learn how to repair cultivation or drilling machinery, application machinery, forage harvesting machinery and combinable or root crop harvesting machinery. You will have hands-on experience using the latest machinery from Massey Ferguson, Fendt and Valtra, gaining skills and knowledge in the repair of the latest advances in technology used in agriculture and agricultural engineering applications.

The AGCO Diploma Training Scheme is an opportunity to “earn while you learn”. You will gain fantastic hands-on practical skills through a manufacturer backed scheme and achieve a range of qualifications as part of your learning programme including:

- **Level 3 Advanced Technical Extended Diploma in Agriculture Engineering**
- **Essential Skills in Numeracy, Literacy and IT**
- **Additional qualifications ie. telescopic handler, abrasive wheels and welding, etc.**

Successful completion of the course can lead to permanent employment within one of AGCO's dealerships across the UK in areas such as agricultural engineering, field service engineering, workshop technicians, marketing and sales.

TAP OR CLICK HERE



for case studies, videos and more

LEARN IN WELSH

available in this subject - see page 07



**WORKING IN
PARTNERSHIP
WITH:**



Kubota Diploma Training Scheme



Kubota is a global engineering manufacturing company specialising in agricultural and construction plant engineering and ground care. Kubota employs more than 40,000 people globally and has a worldwide network in more than 110 countries.

The Kubota Diploma Scheme is a partnership between industry leader, Kubota and agricultural engineering education specialists, Coleg Cambria Llysfas. This industry approved training content is designed to allow young agricultural engineers to progress into positions within Kubota dealerships across the UK.

TAP OR CLICK HERE



for case studies, videos and more

LEARN IN WELSH

available in this subject - see page 07



The Kubota Diploma Scheme is an opportunity to be part of the future of agricultural engineering and “earn while you learn”. By successfully completing the diploma, you will achieve an industry approved qualification at the same time as gaining fantastic hands-on practical skills through a manufacturer-backed scheme and earning a wage.

You will receive a range of qualifications as part of your learning programme including:

- **Level 3 Advanced Technical Extended Diploma in Agriculture Engineering**
- **Agricultural Engineering Skills Challenge Baccalaureate**
- **Essential Skills in Numeracy, Literacy and IT**
- **Additional qualifications ie. telescopic handler, abrasive wheels and welding, etc.**

**EMPLOYERS
WE WORK
WITH:**



Do you receive additional support at school? See page 12

Agriculture & Precision Agriculture



Our Agriculture programme will inspire you to be successful in gaining the technical skills that are required in the modern agricultural industry.

Llysfas has been delivering Agriculture courses for over 100 years as a centre of excellence and our facilities are advancing all the time, from the latest in precision machinery and livestock technology, to the physical building resources and data systems.

We can offer the most up to date training for all of the key sectors in the UK with dedicated professional, industry trained staff, industry supply chain stakeholders and excellent support which will deliver the best quality education that can be offered in a beautiful part of the country.



TAP OR CLICK HERE



for case studies, videos and more

APPRENTICESHIPS

available in this subject - see page 22

LEARN IN WELSH

available in this subject - see page 07

FROM CAMBRIA TO YOUR CAREER

- Farm Manager
- Precision Farming Engineer
- Herd Manager
- Breeding Advisor
- Animal Nutritionist
- Agronomist
- Shearer

FULL TIME COURSES

For Entry Requirements, see page 05

LEVEL	COURSE	SITES
ENTRY	Entry to Land-based Industries	Llysfas
LEVEL 1	Diploma in Land-based Industries	Llysfas
LEVEL 2	Technical Certificate in Agriculture	Llysfas
LEVEL 3	Advanced Technical Diploma in Agriculture	Llysfas

Courses correct at the time of printing, please visit our website for the latest information.

EMPLOYERS WE WORK WITH:



**FREE* TRANSPORT FOR FULL TIME STUDENTS
AGED 16-18, LIVING MORE THAN 3 MILES AWAY**

*subject to eligibility, information correct at time of printing

Forestry & The Countryside



Are you interested in working in the countryside, managing countryside environments, woodlands and forests? Llysfas has one of the finest practical resources on offer.

Set in 400 hectares of estate including 50 hectares of dedicated conservation woodlands, commercial forestry plantations and amenity trees, Llysfas has outstanding flora and fauna with a wide range of natural species, wildlife and vegetation.

We offer a range of countryside programmes for those interested in the arts of rural and country estate management, wildlife conservation, commercial forestry and arboriculture, or more domestic careers in tree surgery.

Tilhill Diploma in Forestry and Woodland Management

Llysfas has partnered with Tilhill, the largest woodland management company in the UK to create the Tilhill Diploma in Forestry and Woodland Management. The Diploma is split into 2 distinct stages, beginning at Level 3.

TAP OR CLICK HERE



for case studies, videos and more

APPRENTICESHIPS

available in this subject - see page 22

FROM CAMBRIA TO YOUR CAREER

- Forester and Woodland Manager
- Tree Surveyor
- Arborist
- Countryside or Wildlife Ranger
- Chainsaw Operator
- Harvesting Contractor
- Tree Surgeon
- Forestry Consultant

FULL TIME COURSES

For Entry Requirements, see page 05

LEVEL	COURSE	SITES
ENTRY	Entry to Land-based Industries	Llysfas
LEVEL 1	Diploma in Land-based Industries	Llysfas
LEVEL 2	Diploma in Countryside and Environment	Llysfas
LEVEL 3	Tilhill Diploma in Forestry and Arboriculture	Llysfas
LEVEL 3	Diploma in Countryside, Wildlife Management	Llysfas

Courses correct at the time of printing, please visit our website for the latest information.

EMPLOYERS WE WORK WITH:



Do you receive additional support at school? See page 12

Welcome to Northhop

Come and study in a friendly, supportive and nurturing environment, where your development is given priority. We specialise in Animal Care, Independent Living Skills and Professional Development.

Your success is our priority. Our team of dedicated staff are here to inspire, motivate, challenge and help you to fulfil your maximum potential, helping you to progress in life, supporting you to move on to your next steps whether that is into employment, further training or university.

Our beautiful Northhop site is set in breathtaking countryside and is located within easy access for North and Mid Wales, as well as Cheshire, Wirral and Shropshire.



What can you study at Northhop?

- **Animal Care and Management**
 - **Independent Living Skills** (page 81)
 - **Professional Development**
- visit www.cambria.ac.uk for details

Please see course pages for further details.



Our Sites & Facilities

Northop

TAP OR CLICK HERE



to take a tour of
this site

Set in 90 acres of breathtaking countryside.

Facilities include:

- Large animal care provision housing over 100 different animal species
- Purpose built small animal care centre
- Farm animal centre
- Stunning countryside estate and ancient woodlands providing unique habitats for a wide range of birds and wildlife
- Links with a wide range of industry partners
- Purpose built Independent Living Skills centre

LEARN IN WELSH

Courses available through the medium of Welsh or bilingually.



Animal Care & Management



If you are passionate about animals, or have an interest in biological science, then this is the course for you!

Our Animal Care Centre houses hundreds of animals from a wide range of exciting species to kick start your career with animals. Whether your passion is reptiles, fish, birds, primates, rodents, dogs, wildlife or farm animals, we have it all!

Whilst studying Animal Care, you will experience all aspects of caring for animals and handling techniques, feeding, cleaning, grooming, health checking and monitoring and providing suitable environments. You will learn skills and knowledge in animal behaviour, health and welfare, nutrition, accommodation and biology.

There are opportunities to complete projects and work experience with a number of organisations and local businesses. Trips and guest speakers are planned to bring all your learning to life.

TAP OR CLICK HERE



for case studies, videos and more

DEGREE LEVEL

courses available in this subject - see page 99

APPRENTICESHIPS

available in this subject - see page 22

FROM CAMBRIA TO YOUR CAREER

- **Zoo Keeper**
- **Animal Rescue**
- **Wildlife Rehabilitation**
- **Kennel and Cattery**
- **Veterinary Assistant**
- **Ecologist**

FULL TIME COURSES

For Entry Requirements, see page 05

LEVEL	COURSE	SITES
ENTRY	Entry to Animal Care	Northop
LEVEL 1	Diploma in Animal Care	Northop
LEVEL 1	Neuro Animal*	Northop
LEVEL 2	Technical Certificate in Animal Care	Northop
LEVEL 2	Animal Nursing Assistants	Northop
LEVEL 2	Neuro Animal*	Northop
LEVEL 3	Advanced Technical Extended Diploma in Animal Management	Northop

Courses correct at the time of printing, please visit our website for the latest information.

*Neuro courses are designed specifically for young people aged 16-25 who have complex social communication difficulties.

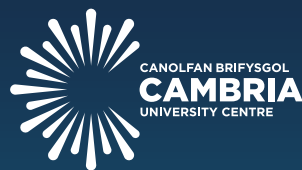
**EMPLOYERS
WE WORK
WITH:**



**FREE* TRANSPORT FOR FULL TIME STUDENTS
AGED 16-18, LIVING MORE THAN 3 MILES AWAY**

*subject to eligibility, information correct at time of printing

GET YOUR DEGREE AT CAMBRIA UNIVERSITY CENTRE



Access to HE | Degrees | Professional Development | Higher & Degree Apprenticeships

At Cambria University Centre, our courses are all designed with employment in mind to maximise your career potential.

Employer input ensures you develop the skills needed to succeed in your chosen career.

We've partnered with some of the best universities and learning companies in the UK to deliver the very best Higher Education in North Wales.

OUR COURSES

Access to Higher Education	Creative Media Production
Advanced Manufacturing Engineering (Electrical/Mechanical)	Criminal Justice
Aeronautical and Manufacturing Engineering	Electrical and Electronic Technology
Agriculture	Engineering (Manufacturing Engineering)
Animal Management	Health and Social Care
Applied Business Management	Mechanical Technology
Childhood Studies	Teaching (PCE-PCET / PGCE-PCET)
Computing	Tourism and Hospitality
Construction and the Built Environment (Civil Engineering & Construction)	Sound Engineering and Music Production
	Sports Coaching

HIGHER & DEGREE APPRENTICESHIPS

Accounting	Construction	Health and Social Care
Aeronautical Engineering	Data Science	Horticulture
Catering and Hospitality	Engineering/Manufacturing	IT & Cyber Security
Childcare	Food Manufacturing	Leadership and Management

www.cambria.ac.uk/university-centre | 0300 30 30 007 | he@cambria.ac.uk



Coming Soon...

**Artist impression:
Healthcare and Therapies Academy, Yale**



TAP OR CLICK HERE



to find out more



**Artist impression:
Llysfas Farming Futures Sustainability Hub**



Our fully commercial salons are based at Deeside (Salon Cambria) and Wrexham (iâl Salon)

From the moment you walk through our doors, we want you to be fully immersed in a salon experience like no other that leaves you looking and feeling great both inside and out.

Offering a fantastic selection of hair and beauty treatments from cuts to a brand new colour, a brow shape to a deep tissue massage, from head to toe we want you to leave feeling great.

SALON
CAMBRIA

For bookings at iâl Salon please visit www.ialsalon.co.uk or call 01978 267650

For Salon Cambria please call 01978 267006 or email saloncambria@cambria.ac.uk

iâl
SALON



CONTEMPORARY RESTAURANT DINING IN WREXHAM

Discover Your New
Favourite Restaurant

01978 548 818
INFO@IALRESTAURANT.CO.UK
WWW.IALRESTAURANT.CO.UK



@IALRESTAURANT



Offering homemade baked goods,
delicious light bite lunches,
pre-bookable afternoon teas
and a simple stylish seasonal main menu,
all washed down by locally sourced
beers, wines and craft spirits.



TAP OR CLICK HERE



to visit the
website

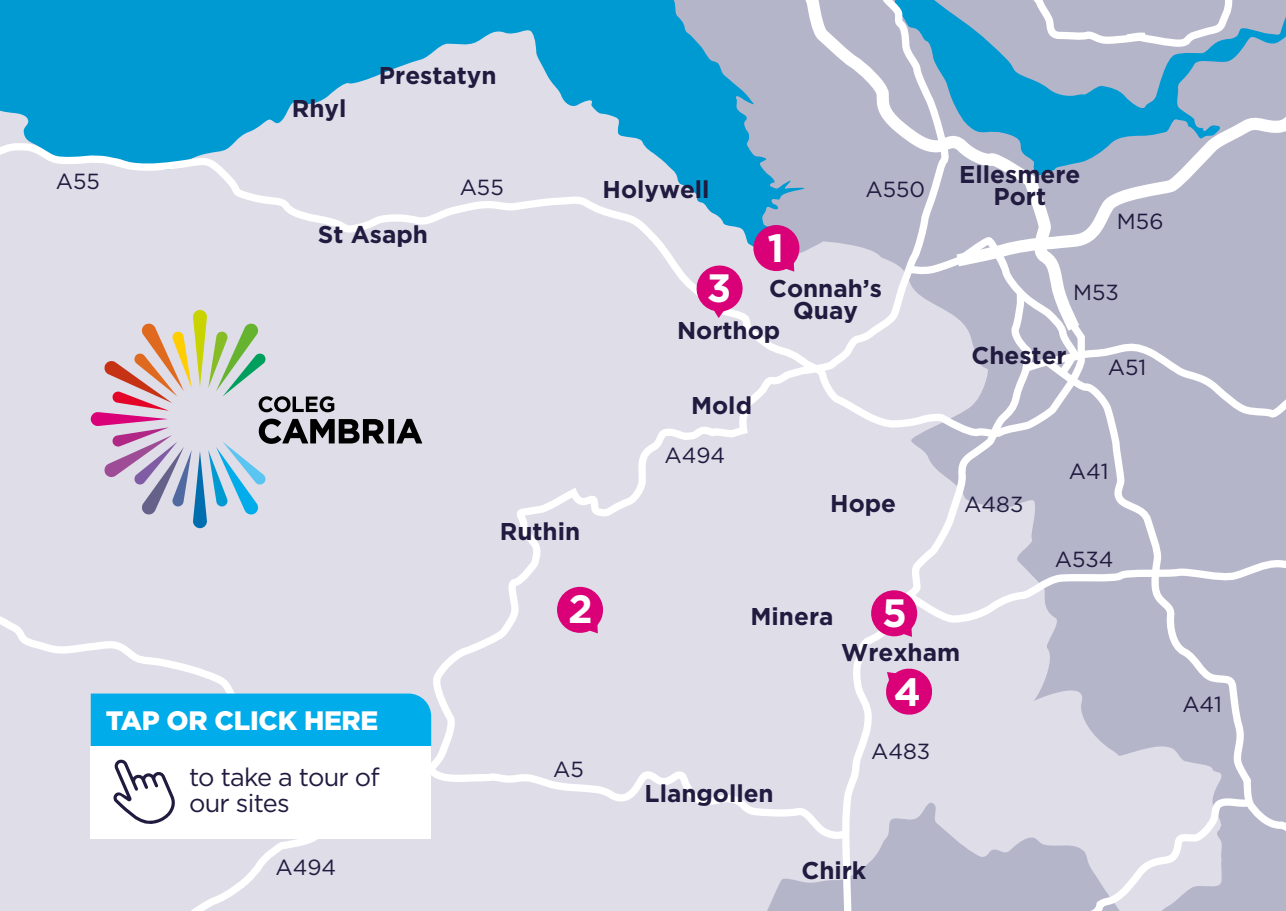




TAP OR CLICK HERE



to take a tour of
our sites



Find us at

1 Deeside

Kelsterton Road
Connah's Quay
Deeside
Flintshire
CH5 4BR

1 Deeside Sixth

Golftyn Lane
Connah's Quay
Deeside
Flintshire
CH5 4BH

2 Llysfasi

Ruthin Road
Ruthin
Denbighshire
LL15 2LB

3 Northop

Holywell Road
Northop
Flintshire
CH7 6AA

4 Bersham Road

Bersham Road
Wrexham
LL13 7UH

5 Yale and Yale Sixth

Grove Park Road
Wrexham
LL12 7AB

The College is committed to equal opportunities. If you require an alternative format of this publication, please call 01978 267047.

This guide is also available in Welsh at receptions and online.
All details correct at the time of printing.

TAP OR CLICK HERE



for details of our
Open Events